

ZBTB2 Antibody

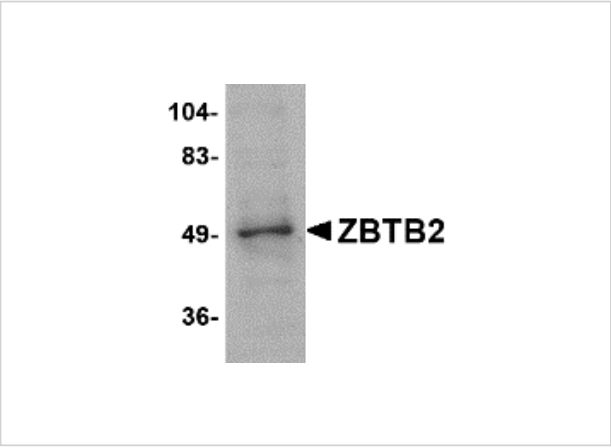
CATALOG NUMBER: 4961

Specifications

Host Species	Rabbit
Species Reactivity	Human, Mouse, Rat
Immunogen	ZBTB2 antibody was raised against a 14 amino acid synthetic peptide near the center of human ZBTB2. The immunogen is located within amino acids 140 - 190 of ZBTB2.
Conjugate	Unconjugated
Tested Applications	ELISA, WB
User Note	Optimal dilutions for each application to be determined by the researcher.
Specificity	This ZBTB2 antibody will not cross-react with ZBTB1.

Properties

Purification	ZBTB2 Antibody is affinity chromatography purified via peptide column.
Clonality	Polyclonal
Isotype	IgG
Physical State	Liquid
Buffer	ZBTB2 Antibody is supplied in PBS containing 0.02% sodium azide.
Concentration	1 mg/mL
Storage Conditions	ZBTB2 antibody can be stored at 4°C for three months and -20°C, stable for up to one year. As with all antibodies care should be taken to avoid repeated freeze thaw cycles. Antibodies should not be exposed to prolonged high temperatures.



ZBTB2 Antibody 1

Western blot analysis of ZBTB2 in PC-3 cell lysate with ZBTB2 antibody at 1 µg/mL.

Disclaimer

Disclaimer	Optimal dilutions/concentrations should be determined by the end user. The information provided is a guideline for product use. This product is for research use only.
-------------------	--

For research use only. For additional information, visit ProSci's [Terms and Conditions Page](#).