

LASS6 Antibody

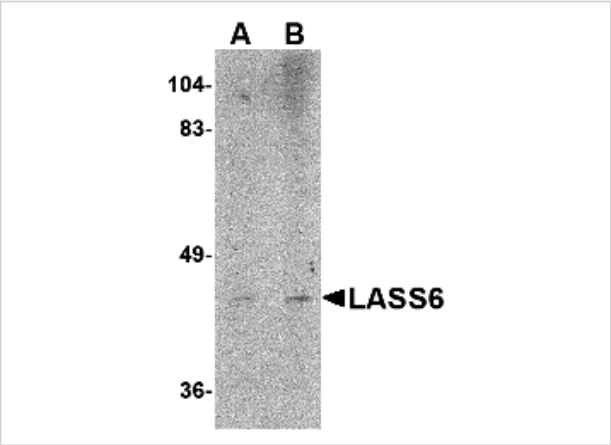
CATALOG NUMBER: 4941

Specifications

Host Species	Rabbit
Species Reactivity	Human, Mouse, Rat
Immunogen	LASS6 antibody was raised against a 13 amino acid synthetic peptide near the carboxy terminus of the human LASS6. The immunogen is located within the last 50 amino acids of LASS6.
Conjugate	Unconjugated
Tested Applications	ELISA, IF, IHC-P, WB
User Note	Optimal dilutions for each application to be determined by the researcher.
Specificity	At least two isoforms of LASS6 are known to exist. This antibody is predicted not to cross-react with LASS5.

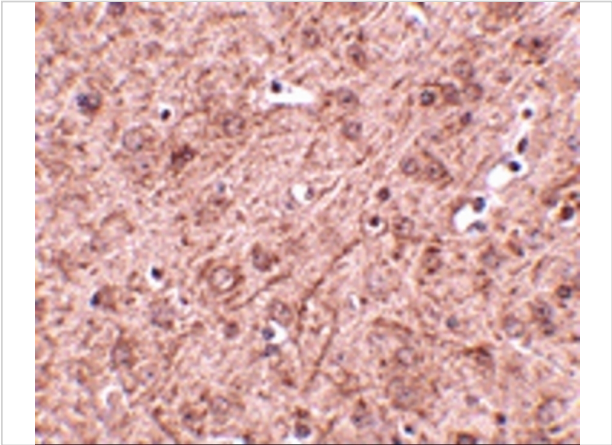
Properties

Purification	LASS6 Antibody is affinity chromatography purified via peptide column.
Clonality	Polyclonal
Isotype	IgG
Physical State	Liquid
Buffer	LASS6 Antibody is supplied in PBS containing 0.02% sodium azide.
Concentration	1 mg/mL
Storage Conditions	LASS6 antibody can be stored at 4°C for three months and -20°C, stable for up to one year. As with all antibodies care should be taken to avoid repeated freeze thaw cycles. Antibodies should not be exposed to prolonged high temperatures.



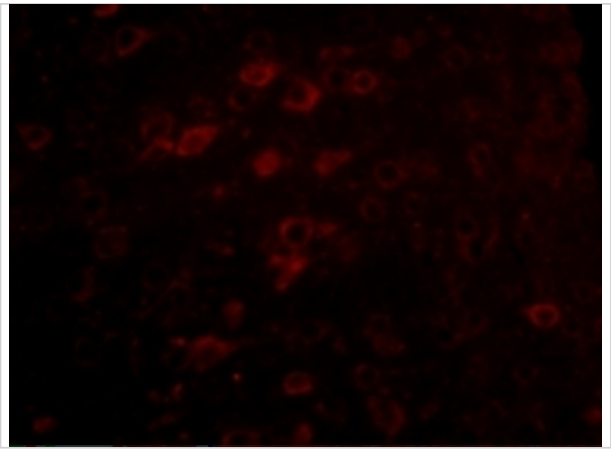
LASS6 Antibody 1

Western blot analysis of LASS6 in rat brain tissue lysate with LASS6 antibody at (A) 1 and (B) 2 µg/mL.



LASS6 Antibody 2

Immunohistochemistry of LASS6 in mouse brain tissue with LASS6 antibody at 2.5 µg/mL.



LASS6 Antibody 3

Immunofluorescence of LASS6 in Mouse Brain cells with LASS6 antibody at 5 µg/mL.

Disclaimer

Disclaimer	Optimal dilutions/concentrations should be determined by the end user. The information provided is a guideline for product use. This product is for research use only.
------------	--

For research use only. For additional information, visit ProSci's [Terms and Conditions Page](#).