

## JPH2 Antibody

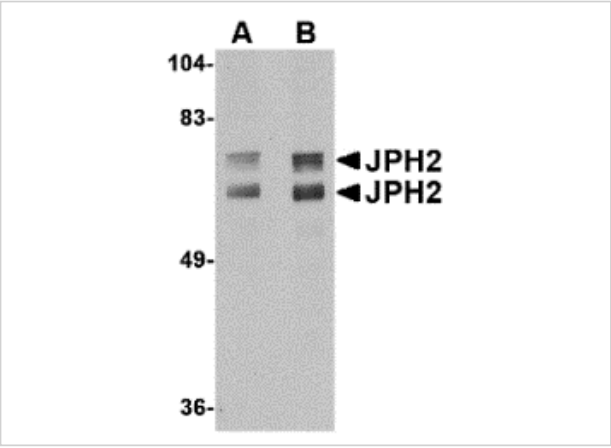
CATALOG NUMBER: 4929

### Specifications

Host Species	Rabbit
Species Reactivity	Human, Mouse, Rat
Homology	Predicted species reactivity based on immunogen sequence: Rabbit: (88%)
Immunogen	JPH2 antibody was raised against a 17 amino acid synthetic peptide near the carboxy terminus of human JPH2. The immunogen is located within amino acids 470 - 520 of JPH2.
Conjugate	Unconjugated
Tested Applications	ELISA, IHC-P, WB
User Note	Optimal dilutions for each application to be determined by the researcher.

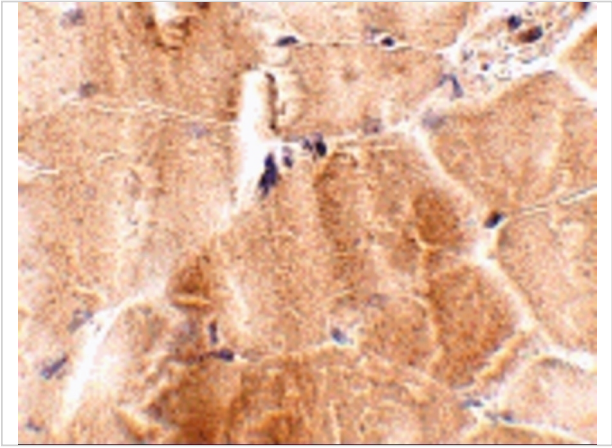
### Properties

Purification	JPH2 Antibody is affinity chromatography purified via peptide column.
Clonality	Polyclonal
Isotype	IgG
Physical State	Liquid
Buffer	JPH2 Antibody is supplied in PBS containing 0.02% sodium azide.
Concentration	1 mg/mL
Storage Conditions	JPH2 antibody can be stored at 4°C for three months and -20°C, stable for up to one year. As with all antibodies care should be taken to avoid repeated freeze thaw cycles. Antibodies should not be exposed to prolonged high temperatures.



JPH2 Antibody 1

Western blot analysis of JPH2 in mouse brain tissue lysate with JPH2 antibody at (A) 1 and (B) 2 µg/mL.



JPH2 Antibody 2

Immunohistochemistry of JPH2 in mouse skeletal muscle tissue with JPH2 antibody at 2.5 µg/mL.

Disclaimer

Disclaimer	Optimal dilutions/concentrations should be determined by the end user. The information provided is a guideline for product use. This product is for research use only.
------------	--

For research use only. For additional information, visit ProSci's [Terms and Conditions Page](#).