

DISP2 Antibody

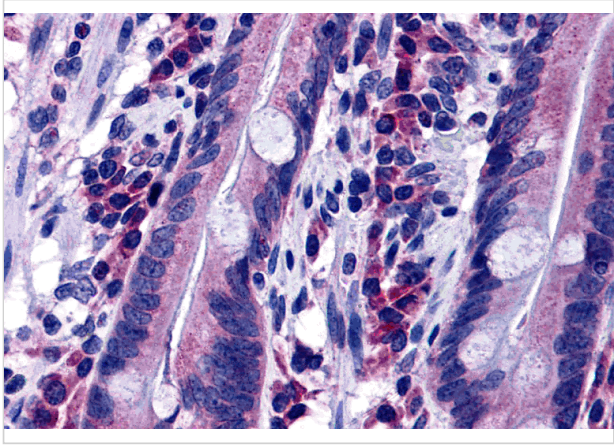
CATALOG NUMBER: 4893

Specifications

Host Species	Rabbit
Species Reactivity	Human
Immunogen	DISP2 antibody was raised against an 18 amino acid synthetic peptide near the amino terminus of human DISP2. The immunogen is located within amino acids 110 - 160 of DISP2.
Conjugate	Unconjugated
Tested Applications	ELISA, IHC-P
User Note	Optimal dilutions for each application to be determined by the researcher.
Specificity	DISP2 antibody is human specific. At least two isoforms of Disp2 are known to exist. DISP2 antibody is predicted to not cross-react with Disp1 or Disp3.

Properties

Purification	DISP2 Antibody is affinity chromatography purified via peptide column.
Clonality	Polyclonal
Isotype	IgG
Physical State	Liquid
Buffer	DISP2 Antibody is supplied in PBS containing 0.02% sodium azide.
Concentration	1 mg/mL
Storage Conditions	DISP2 antibody can be stored at 4°C for three months and -20°C, stable for up to one year. As with all antibodies care should be taken to avoid repeated freeze thaw cycles. Antibodies should not be exposed to prolonged high temperatures.



DISP2 Antibody 1

Immunohistochemistry of DISP2 in human small intestine tissue with DISP2 antibody at 5 µg/mL.

Disclaimer

Disclaimer	Optimal dilutions/concentrations should be determined by the end user. The information provided is a guideline for product use. This product is for research use only.
------------	--

For research use only. For additional information, visit ProSci's [Terms and Conditions Page](#).