

MettL7B Antibody

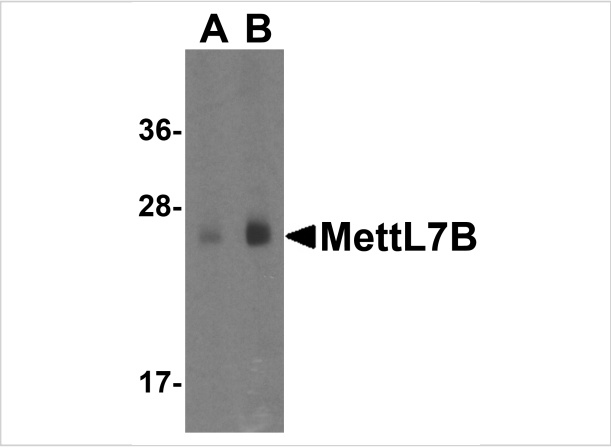
CATALOG NUMBER: 4891

Specifications

Host Species	Rabbit
Species Reactivity	Human, Mouse
Immunogen	MettL7B antibody was raised against a 13 amino acid synthetic peptide near the amino terminus of human MettL7B. The immunogen is located within amino acids 20 - 70 of MettL7B.
Conjugate	Unconjugated
Tested Applications	ELISA, IHC-P, WB
User Note	Optimal dilutions for each application to be determined by the researcher.
Specificity	This MettL7B antibody is predicted to not cross-react with MettL7A.
Predicted Molecular Weight	Predicted: 27 kDa Observed: 27 kDa

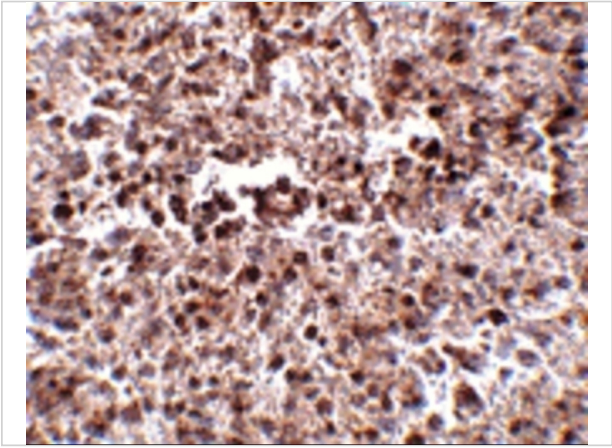
Properties

Purification	MettL7B Antibody is affinity chromatography purified via peptide column.
Clonality	Polyclonal
Isotype	IgG
Physical State	Liquid
Buffer	MettL7B Antibody is supplied in PBS containing 0.02% sodium azide.
Concentration	1 mg/mL
Storage Conditions	MettL7B antibody can be stored at 4°C for three months and -20°C, stable for up to one year. As with all antibodies care should be taken to avoid repeated freeze thaw cycles. Antibodies should not be exposed to prolonged high temperatures.



MettL7B Antibody 1

Western blot analysis of Mettl7B in human colon tissue lysate with Mettl7B antibody at (A) 1 and (B) 2 $\mu\text{g/mL}$.



MettL7B Antibody 2

Immunohistochemistry of Mettl7B in human spleen tissue with Mettl7B antibody at 2.5 $\mu\text{g/mL}$.

Disclaimer

Disclaimer	Optimal dilutions/concentrations should be determined by the end user. The information provided is a guideline for product use. This product is for research use only.
------------	--

For research use only. For additional information, visit ProSci's [Terms and Conditions Page](#).