

## Aipl1 Antibody

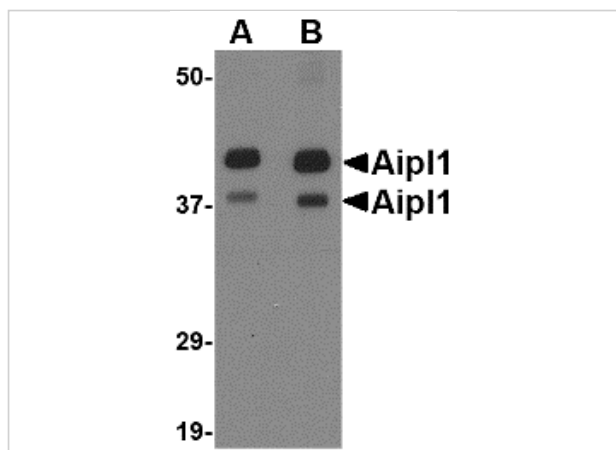
CATALOG NUMBER: 4865

### Specifications

Host Species	Rabbit
Species Reactivity	Human, Mouse, Rat
Homology	Predicted species reactivity based on immunogen sequence: Bovine: (78%)
Immunogen	Aipl1 antibody was raised against a 18 amino acid synthetic peptide near the center of the human Aipl1. The immunogen is located within amino acids 140 - 190 of Aipl1.
Conjugate	Unconjugated
Tested Applications	ELISA, IF, IHC-P, WB
User Note	Optimal dilutions for each application to be determined by the researcher.

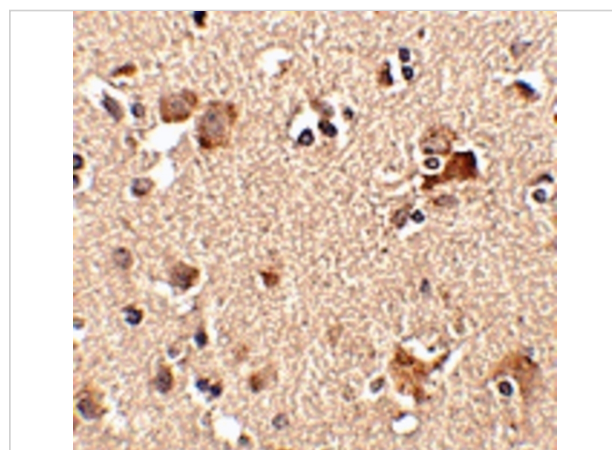
### Properties

Purification	Aipl1 Antibody is affinity chromatography purified via peptide column.
Clonality	Polyclonal
Isotype	IgG
Physical State	Liquid
Buffer	Aipl1 Antibody is supplied in PBS containing 0.02% sodium azide.
Concentration	1 mg/mL
Storage Conditions	Aipl1 antibody can be stored at 4°C for three months and -20°C, stable for up to one year. As with all antibodies care should be taken to avoid repeated freeze thaw cycles. Antibodies should not be exposed to prolonged high temperatures.



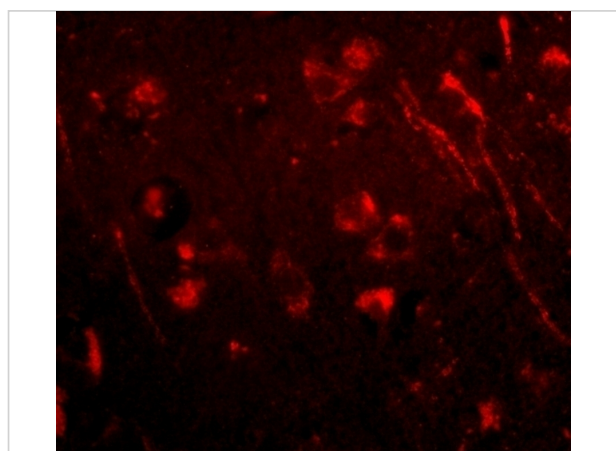
### Aipl1 Antibody 1

Western blot analysis of Aipl1 in rat brain tissue lysate with Aipl1 antibody at (A) 1 and (B) 2  $\mu\text{g/mL}$ .



### Aipl1 Antibody 2

Immunohistochemistry of Aipl1 in human brain tissue with Aipl1 antibody at 2.5  $\mu\text{g/mL}$ .



### Aipl1 Antibody 3

Immunofluorescence of aipl1 in human brain tissue with aipl1 antibody at 20  $\mu\text{g/mL}$ .

## Disclaimer

#### Disclaimer

Optimal dilutions/concentrations should be determined by the end user. The information provided is a guideline for product use. This product is for research use only.

For research use only. For additional information, visit ProSci's [Terms and Conditions Page](#).