

## Aak1 Antibody

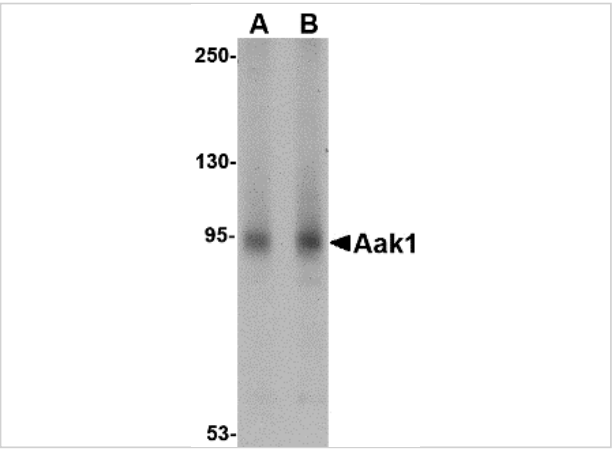
CATALOG NUMBER: 4841

### Specifications

Host Species	Rabbit
Species Reactivity	Human, Mouse, Rat
Homology	Predicted species reactivity based on immunogen sequence: Pig: (100%), Bovine: (100%)
Immunogen	Aak1 antibody was raised against a 20 amino acid synthetic peptide near the amino terminus of the human Aak1. The immunogen is located within amino acids 190 - 240 of Aak1.
Conjugate	Unconjugated
Tested Applications	ELISA, ICC, IF, WB
User Note	Optimal dilutions for each application to be determined by the researcher.

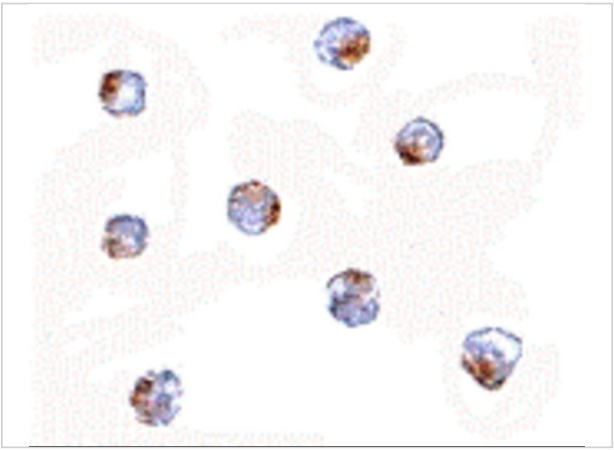
### Properties

Purification	Aak1 Antibody is affinity chromatography purified via peptide column.
Clonality	Polyclonal
Isotype	IgG
Physical State	Liquid
Buffer	Aak1 Antibody is supplied in PBS containing 0.02% sodium azide.
Concentration	1 mg/mL
Storage Conditions	Aak1 antibody can be stored at 4°C for three months and -20°C, stable for up to one year. As with all antibodies care should be taken to avoid repeated freeze thaw cycles. Antibodies should not be exposed to prolonged high temperatures.



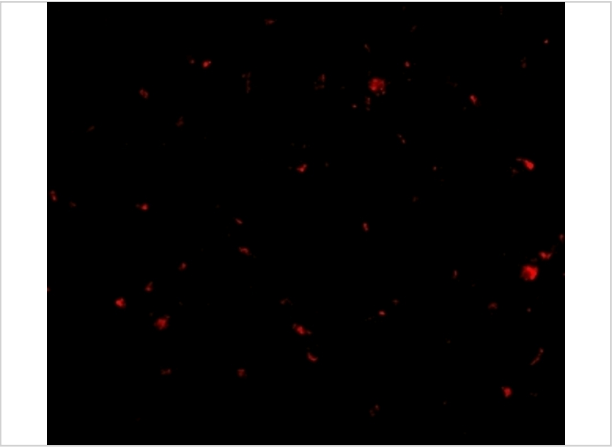
Aak1 Antibody 1

Western blot analysis of Aak1 in A-20 lysate with Aak1 antibody at (A) 1 and (B) 2 µg/mL.



Aak1 Antibody 2

Immunocytochemistry of Aak1 in A-20 cells with Aak1 antibody at 5 µg/mL.



Aak1 Antibody 3

Immunofluorescence of aak1 in human brain tissue with aak1 antibody at 20 µg/mL.

Disclaimer

Disclaimer	Optimal dilutions/concentrations should be determined by the end user. The information provided is a guideline for product use. This product is for research use only.
------------	------------------------------------------------------------------------------------------------------------------------------------------------------------------------

For research use only. For additional information, visit ProSci's [Terms and Conditions Page](#).