

ACVR1B Antibody

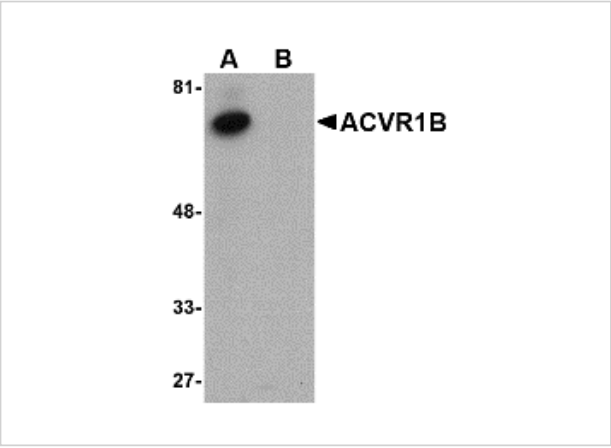
CATALOG NUMBER: 4793

Specifications

Host Species	Rabbit
Species Reactivity	Human, Mouse
Homology	Predicted species reactivity based on immunogen sequence: Rat: (100%)
Immunogen	ACVR1B antibody was raised against a 14 amino acid synthetic peptide near the carboxy terminus of the human ACVR1B. The immunogen is located within amino acids 140 - 190 of ACVR1B.
Conjugate	Unconjugated
Tested Applications	ELISA, WB
User Note	Optimal dilutions for each application to be determined by the researcher.
Specificity	At least three isoforms of ACVR1B are known to exist. This antibody is predicted to have no cross-reactivity to ACVR1 or ACVR1C.

Properties

Purification	ACVR1B Antibody is affinity chromatography purified via peptide column.
Clonality	Polyclonal
Isotype	IgG
Physical State	Liquid
Buffer	ACVR1B Antibody is supplied in PBS containing 0.02% sodium azide.
Concentration	1 mg/mL
Storage Conditions	ACVR1B antibody can be stored at 4°C for three months and -20°C, stable for up to one year. As with all antibodies care should be taken to avoid repeated freeze thaw cycles. Antibodies should not be exposed to prolonged high temperatures.



ACVR1B Antibody 1

Western blot analysis of ACVR1B in human kidney tissue lysate with ACVR1B antibody at 1 µg/mL in (A) the absence and (B) the presence of blocking peptide.

Disclaimer

Disclaimer	Optimal dilutions/concentrations should be determined by the end user. The information provided is a guideline for product use. This product is for research use only.
------------	------------------------------------------------------------------------------------------------------------------------------------------------------------------------

For research use only. For additional information, visit ProSci's [Terms and Conditions Page](#).