

PRTFDC1 Antibody

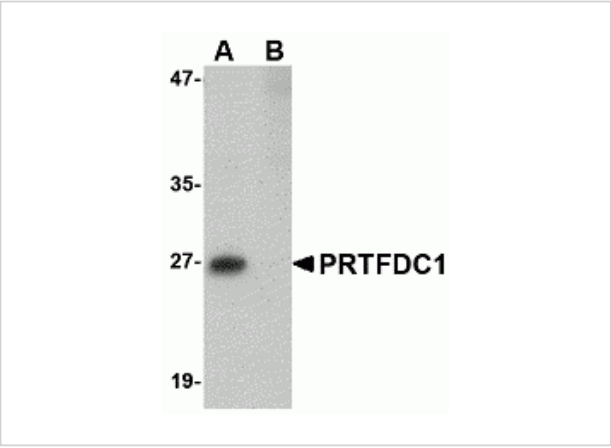
CATALOG NUMBER: 4775

Specifications

| | |
|----------------------------|--|
| Host Species | Rabbit |
| Species Reactivity | Human, Rat |
| Homology | Predicted species reactivity based on immunogen sequence: Chicken: (86%), Pig: (86%), Bovine: (86%), Mouse: (86%) |
| Immunogen | PRTFDC1 antibody was raised against a 14 amino acid synthetic peptide from near the center of human PRTFDC1. The immunogen is located within amino acids 90 - 140 of PRTFDC1. |
| Conjugate | Unconjugated |
| Tested Applications | ELISA, WB |
| User Note | Optimal dilutions for each application to be determined by the researcher. |

Properties

| | |
|---------------------------|---|
| Purification | PRTFDC1 Antibody is affinity chromatography purified via peptide column. |
| Clonality | Polyclonal |
| Isotype | IgG |
| Physical State | Liquid |
| Buffer | PRTFDC1 Antibody is supplied in PBS containing 0.02% sodium azide. |
| Concentration | 1 mg/mL |
| Storage Conditions | PRTFDC1 antibody can be stored at 4°C for three months and -20°C, stable for up to one year. As with all antibodies care should be taken to avoid repeated freeze thaw cycles. Antibodies should not be exposed to prolonged high temperatures. |



PRTFDC1 Antibody 1

Western blot analysis of PRTFDC1 in human brain tissue lysate with PRTFDC1 antibody at 1 µg/mL in the (A) absence and (B) presence of blocking peptide.

Disclaimer

| | |
|------------|--|
| Disclaimer | Optimal dilutions/concentrations should be determined by the end user. The information provided is a guideline for product use. This product is for research use only. |
|------------|--|

For research use only. For additional information, visit ProSci's [Terms and Conditions Page](#).