

GPVI Antibody

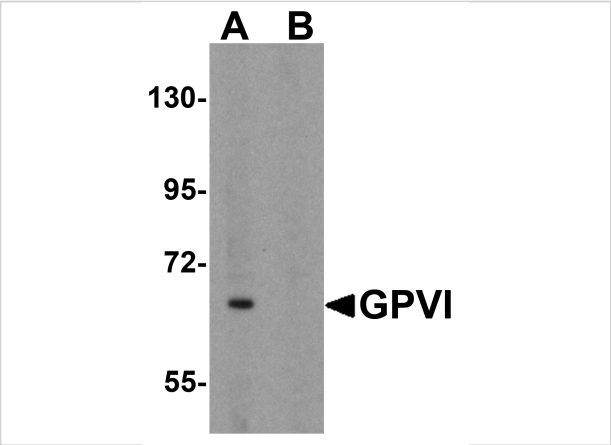
CATALOG NUMBER: 4769

Specifications

Host Species	Rabbit
Species Reactivity	Human, Mouse, Rat
Immunogen	GPVI antibody was raised against a 15 amino acid synthetic peptide near the carboxy terminus of isoform 2 of the human GPVI. The immunogen is located within the last 50 amino acids of GPVI.
Conjugate	Unconjugated
Tested Applications	ELISA, IF, IHC-P, WB
User Note	Optimal dilutions for each application to be determined by the researcher.
Specificity	At least three GPVI isoforms are known to exist; this antibody will detect the two longest isoforms. Because of its extensive glycosylation, GPVI often migrates at a higher than expected molecular weight in SDS-PAGE.
Predicted Molecular Weight	Predicted: 68 kDa Observed: 67 kDa

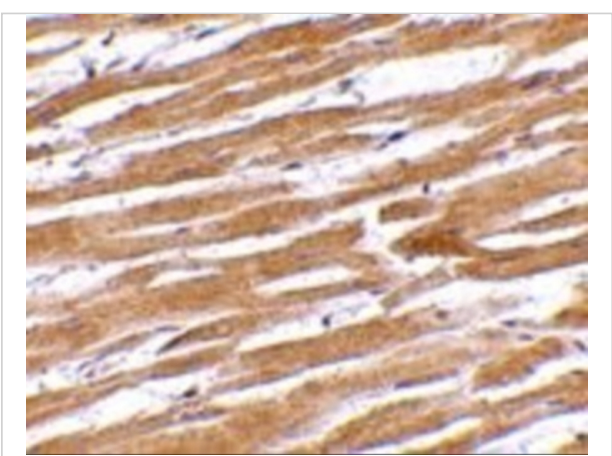
Properties

Purification	GPVI Antibody is affinity chromatography purified via peptide column.
Clonality	Polyclonal
Isotype	IgG
Physical State	Liquid
Buffer	GPVI Antibody is supplied in PBS containing 0.02% sodium azide.
Concentration	1 mg/mL
Storage Conditions	GPVI antibody can be stored at 4°C for three months and -20°C, stable for up to one year. As with all antibodies care should be taken to avoid repeated freeze thaw cycles. Antibodies should not be exposed to prolonged high temperatures.



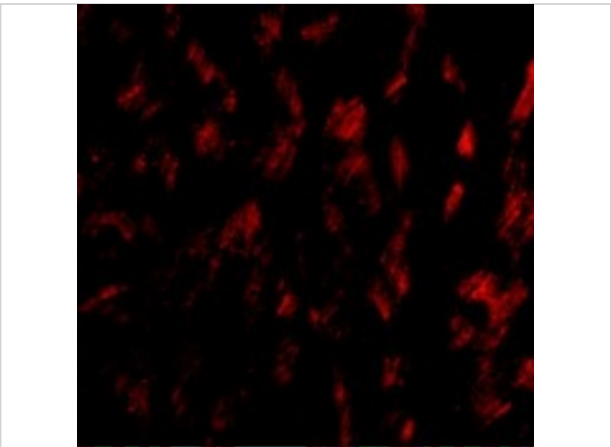
GPVI Antibody 1

Western blot analysis of GPVI in K562 cell lysate with GPVI antibody at 1 µg/mL in (A) the absence and (B) the presence of blocking peptide.



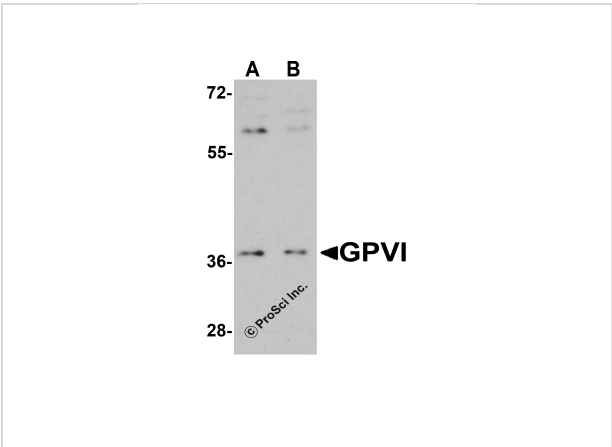
GPVI Antibody 2

Immunohistochemistry of GPVI in human heart tissue with GPVI antibody at 10 µg/mL.



GPVI Antibody 3

Immunofluorescence of GPVI in Human Heart tissue with GPVI antibody at 20 µg/mL.



GPVI Antibody 4

Western blot analysis of GPVI in HeLa (A) and Jurkat (B) with GPVI antibody at 1 µg/mL.

Disclaimer

Disclaimer	Optimal dilutions/concentrations should be determined by the end user. The information provided is a guideline for product use. This product is for research use only.
------------	--

For research use only. For additional information, visit ProSci's [Terms and Conditions Page](#).