

## POFUT1 Antibody

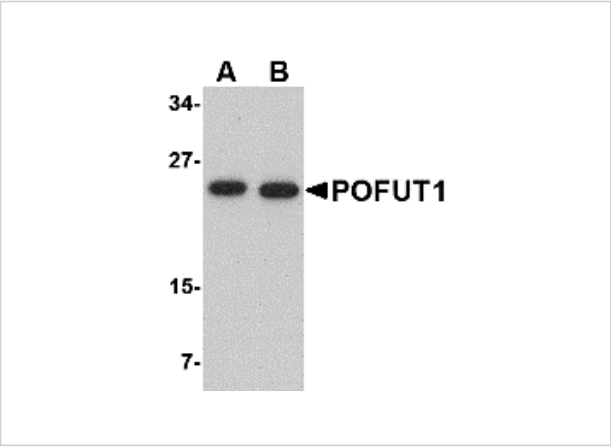
CATALOG NUMBER: 4765

### Specifications

Host Species	Rabbit
Species Reactivity	Human, Mouse
Homology	Predicted species reactivity based on immunogen sequence: Rat: (94%)
Immunogen	POFUT1 antibody was raised against a 16 amino acid synthetic peptide from near the amino terminus of human POFUT1. The immunogen is located within amino acids 90 - 140 of POFUT1.
Conjugate	Unconjugated
Tested Applications	ELISA, IHC-P, WB
User Note	Optimal dilutions for each application to be determined by the researcher.
Specificity	At least two isoforms of POFUT1 are known to exist. This antibody is predicted to not cross-react with POFUT2.

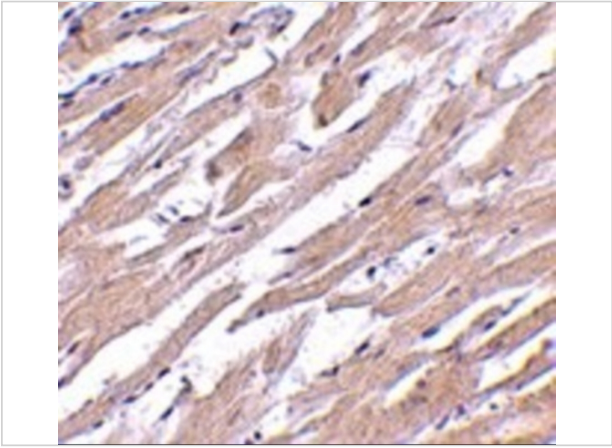
### Properties

Purification	POFUT1 Antibody is affinity chromatography purified via peptide column.
Clonality	Polyclonal
Isotype	IgG
Physical State	Liquid
Buffer	POFUT1 Antibody is supplied in PBS containing 0.02% sodium azide.
Concentration	1 mg/mL
Storage Conditions	POFUT1 antibody can be stored at 4°C for three months and -20°C, stable for up to one year. As with all antibodies care should be taken to avoid repeated freeze thaw cycles. Antibodies should not be exposed to prolonged high temperatures.



POFUT1 Antibody 1

Western blot analysis of POFUT1 in human heart tissue lysate with POFUT1 antibody at (A) 0.5 and (B) 1 µg/mL.



POFUT1 Antibody 2

Immunohistochemistry of POFUT1 in human heart tissue with POFUT antibody at 2.5 µg/mL.

Disclaimer

Disclaimer	Optimal dilutions/concentrations should be determined by the end user. The information provided is a guideline for product use. This product is for research use only.
------------	--

For research use only. For additional information, visit ProSci's [Terms and Conditions Page](#).