



ProSci Incorporated
12170 Flint Place
Poway, CA 92064, USA
prosci-inc.com

P: +1 (888) 513-9525
Local: +1 (858) 513-2638
Fax: +1 (858) 513-2692

customercare@prosci-inc.com
techsupport@prosci-inc.com

PARL Antibody

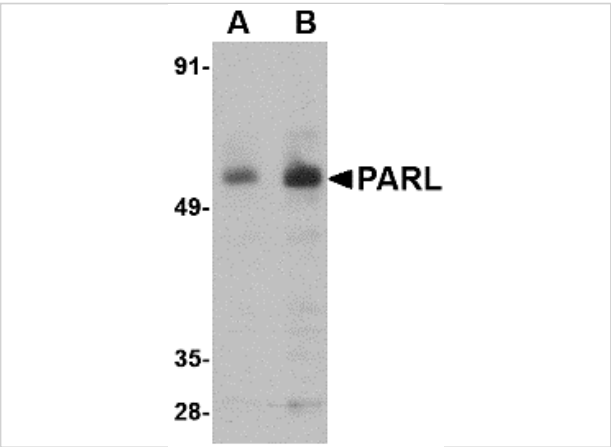
CATALOG NUMBER: 4761

Specifications

Host Species	Rabbit
Species Reactivity	Human, Mouse, Rat
Homology	Predicted species reactivity based on immunogen sequence: Bovine: (100%)
Immunogen	PARL antibody was raised against a 15 amino acid synthetic peptide from near the amino terminus of human PARL. The immunogen is located within amino acids 40 - 90 of PARL.
Conjugate	Unconjugated
Tested Applications	ELISA, ICC, IF, WB
User Note	Optimal dilutions for each application to be determined by the researcher.

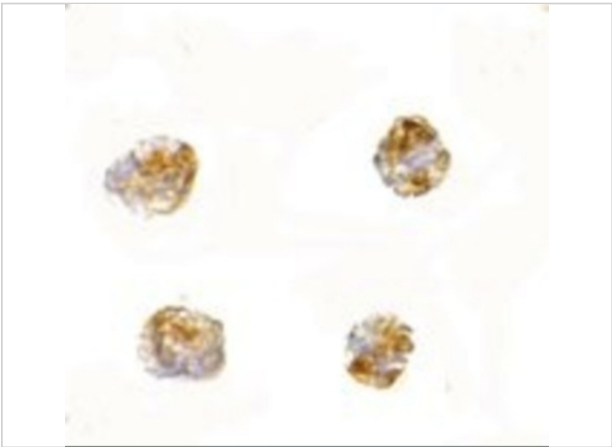
Properties

Purification	PARL Antibody is affinity chromatography purified via peptide column.
Clonality	Polyclonal
Isotype	IgG
Physical State	Liquid
Buffer	PARL Antibody is supplied in PBS containing 0.02% sodium azide.
Concentration	1 mg/mL
Storage Conditions	PARL antibody can be stored at 4°C for three months and -20°C, stable for up to one year. As with all antibodies care should be taken to avoid repeated freeze thaw cycles. Antibodies should not be exposed to prolonged high temperatures.



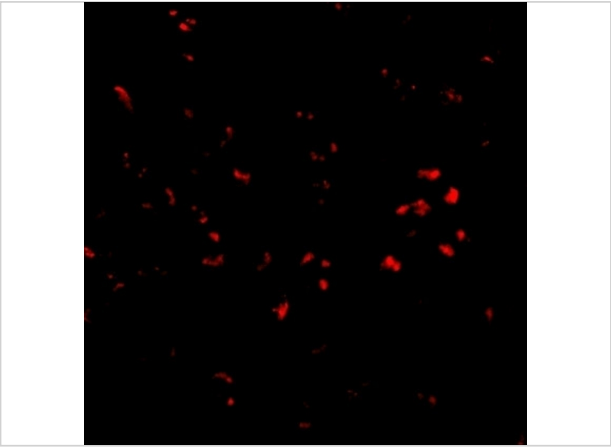
PARL Antibody 1

Western blot analysis of PARL in 3T3 cell lysate with PARL antibody at (A) 1 and (B) 2 µg/mL.



PARL Antibody 2

Immunocytochemistry of PARL in 3T3 cells with PARL antibody at 2.5 µg/mL.



PARL Antibody 3

Immunofluorescence of PARL in 3T3 cells with PARL antibody at 2.50 µg/mL.

Disclaimer

Disclaimer	Optimal dilutions/concentrations should be determined by the end user. The information provided is a guideline for product use. This product is for research use only.
-------------------	--

For research use only. For additional information, visit ProSci's [Terms and Conditions Page](#).