

CAPN6 Antibody

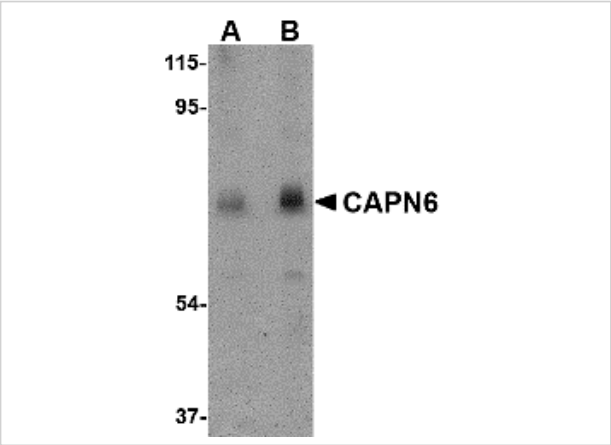
CATALOG NUMBER: 4759

Specifications

Host Species	Rabbit
Species Reactivity	Human, Mouse, Rat
Immunogen	CAPN6 antibody was raised against a 18 amino acid synthetic peptide from near the carboxy terminus of human CAPN6. The immunogen is located within the last 50 amino acids of CAPN6.
Conjugate	Unconjugated
Tested Applications	ELISA, IF, IHC-P, WB
User Note	Optimal dilutions for each application to be determined by the researcher.

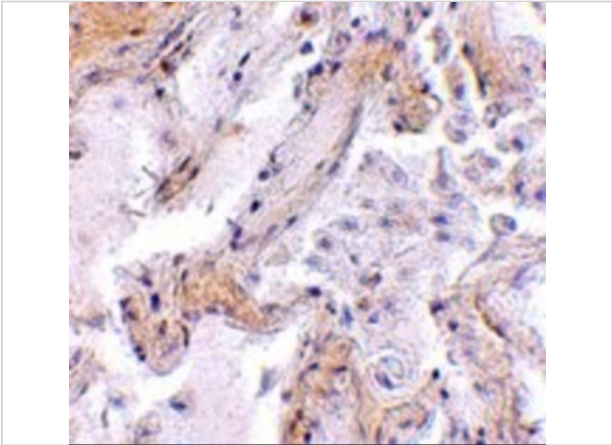
Properties

Purification	CAPN6 Antibody is affinity chromatography purified via peptide column.
Clonality	Polyclonal
Isotype	IgG
Physical State	Liquid
Buffer	CAPN6 Antibody is supplied in PBS containing 0.02% sodium azide.
Concentration	1 mg/mL
Storage Conditions	CAPN6 antibody can be stored at 4°C for three months and -20°C, stable for up to one year. As with all antibodies care should be taken to avoid repeated freeze thaw cycles. Antibodies should not be exposed to prolonged high temperatures.



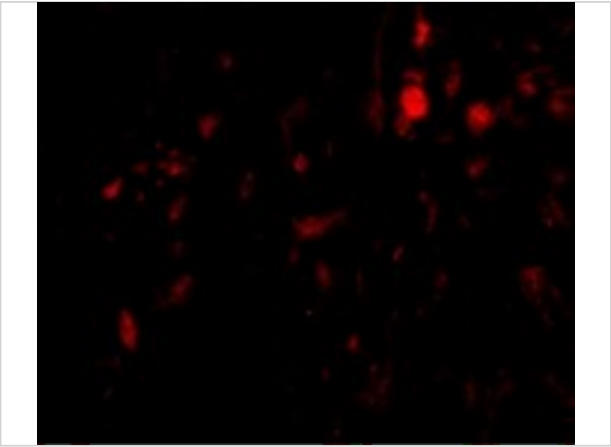
CAPN6 Antibody 1

Western blot analysis of CAPN6 in rat lung tissue lysate with CAPN6 antibody at (A) 0.5 and (B) 1 μ g/mL.



CAPN6 Antibody 2

Immunohistochemistry of CAPN6 in human lung tissue with CAPN6 antibody at 2.5 μ g/mL.



CAPN6 Antibody 3

Immunofluorescence of CAPN6 in Human Lung cells with CAPN6 antibody at 20 μ g/mL.

Disclaimer

Disclaimer	Optimal dilutions/concentrations should be determined by the end user. The information provided is a guideline for product use. This product is for research use only.
------------	--

For research use only. For additional information, visit ProSci's [Terms and Conditions Page](#).