

TRIM30 Antibody

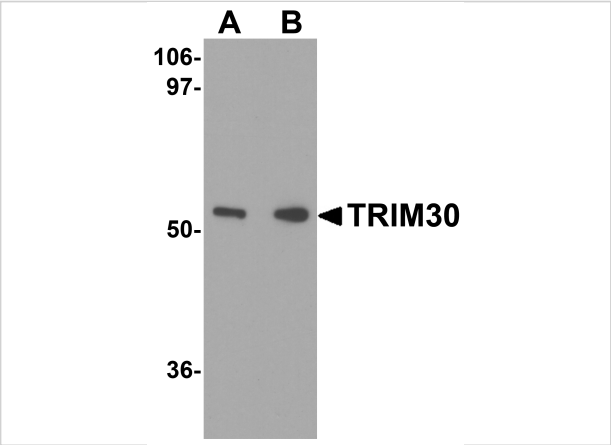
CATALOG NUMBER: 4747

Specifications

Host Species	Rabbit
Species Reactivity	Mouse, Rat
Homology	Predicted species reactivity based on immunogen sequence: Human: (80%)
Immunogen	TRIM30 antibody was raised against a 21 amino acid synthetic peptide near the amino terminus of the mouse TRIM30. The immunogen is located within amino acids 110 - 160 of TRIM30.
Conjugate	Unconjugated
Tested Applications	ELISA, IF, IHC-P, WB
User Note	Optimal dilutions for each application to be determined by the researcher.
Predicted Molecular Weight	Predicted: 107 kDa Observed: 105 kDa

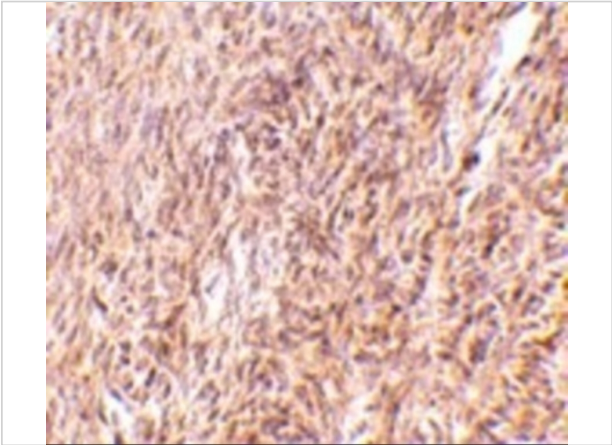
Properties

Purification	TRIM30 Antibody is affinity chromatography purified via peptide column.
Clonality	Polyclonal
Isotype	IgG
Physical State	Liquid
Buffer	TRIM30 Antibody is supplied in PBS containing 0.02% sodium azide.
Concentration	1 mg/mL
Storage Conditions	TRIM30 antibody can be stored at 4°C for three months and -20°C, stable for up to one year. As with all antibodies care should be taken to avoid repeated freeze thaw cycles. Antibodies should not be exposed to prolonged high temperatures.



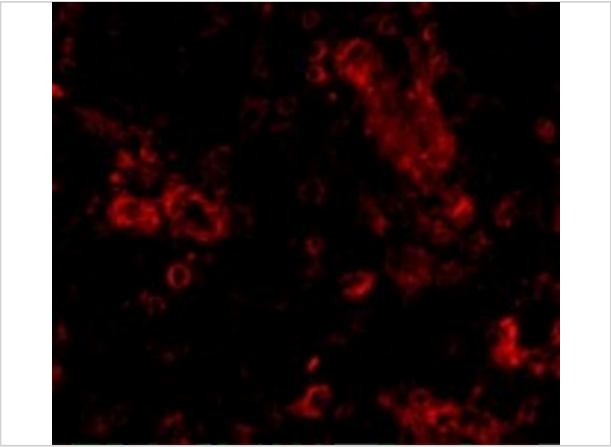
TRIM30 Antibody 1

Western blot analysis of TRIM30 in mouse heart tissue lysate with TRIM30 antibody at (A) 1 and (B) 2 µg/mL.



TRIM30 Antibody 2

Immunohistochemistry of TRIM30 in mouse ovary tissue with TRIM30 antibody at 10 µg/mL.



TRIM30 Antibody 3

Immunofluorescence of TRIM30 in Human Ovary cells with TRIM30 antibody at 20 µg/mL.

Disclaimer

Disclaimer	Optimal dilutions/concentrations should be determined by the end user. The information provided is a guideline for product use. This product is for research use only.
------------	--

For research use only. For additional information, visit ProSci's [Terms and Conditions Page](#).