

NUP160 Antibody

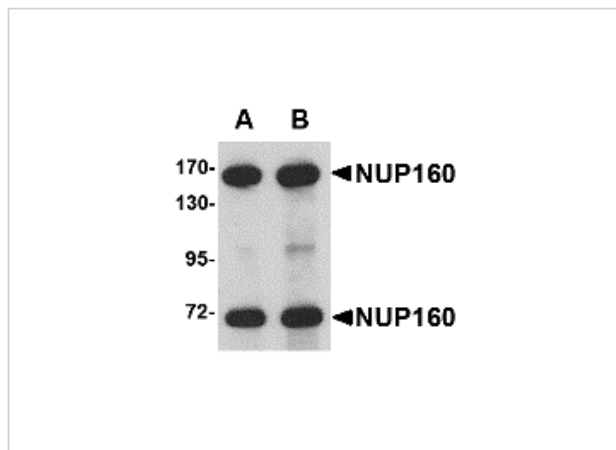
CATALOG NUMBER: 4707

Specifications

Host Species	Rabbit
Species Reactivity	Human, Mouse, Rat
Immunogen	NUP160 antibody was raised against a 14 amino acid synthetic peptide from near the carboxy terminus of human NUP160. The immunogen is located within the last 50 amino acids of NUP160.
Conjugate	Unconjugated
Tested Applications	ELISA, IF, IHC-P, WB
User Note	Optimal dilutions for each application to be determined by the researcher.

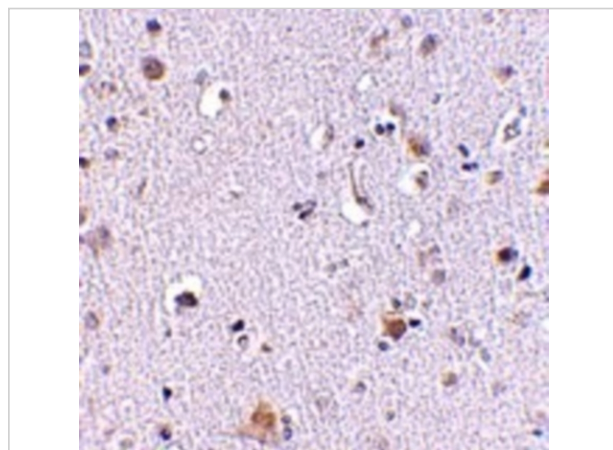
Properties

Purification	NUP160 Antibody is affinity chromatography purified via peptide column.
Clonality	Polyclonal
Isotype	IgG
Physical State	Liquid
Buffer	NUP160 Antibody is supplied in PBS containing 0.02% sodium azide.
Concentration	1 mg/mL
Storage Conditions	NUP160 antibody can be stored at 4°C for three months and -20°C, stable for up to one year. As with all antibodies care should be taken to avoid repeated freeze thaw cycles. Antibodies should not be exposed to prolonged high temperatures.



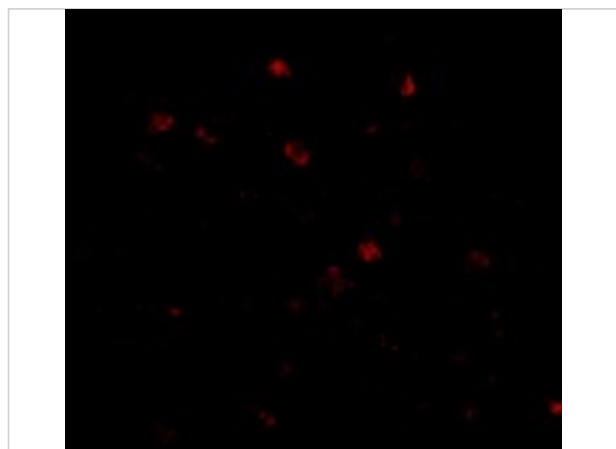
NUP160 Antibody 1

Western blot analysis of NUP160 in rat brain tissue lysate with NUP160 antibody at (A) 0.5 and (B) 1 $\mu\text{g/mL}$.



NUP160 Antibody 2

Immunohistochemistry of NUP160 in human brain tissue with NUP160 antibody at 2.5 $\mu\text{g/mL}$.



NUP160 Antibody 3

Immunofluorescence of NUP160 in Human Brain cells with NUP160 antibody at 20 $\mu\text{g/mL}$.

Disclaimer

Disclaimer

Optimal dilutions/concentrations should be determined by the end user. The information provided is a guideline for product use. This product is for research use only.

For research use only. For additional information, visit ProSci's [Terms and Conditions Page](#).