

SATB1 Antibody

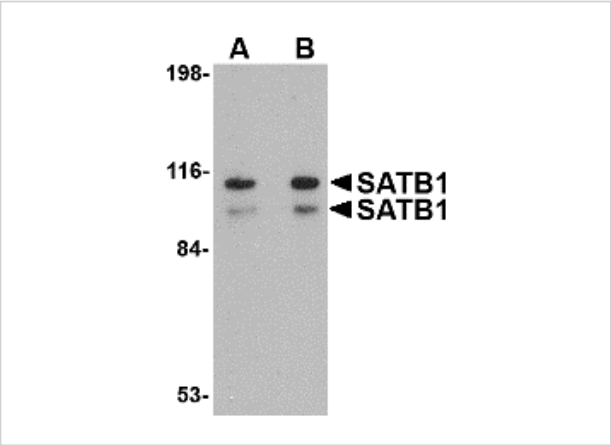
CATALOG NUMBER: 4679

Specifications

Host Species	Rabbit
Species Reactivity	Human, Mouse, Rat
Immunogen	SATB1 antibody was raised against a 18 amino acid synthetic peptide near the amino terminus of the human SATB1. The immunogen is located within the first 50 amino acids of SATB1.
Conjugate	Unconjugated
Tested Applications	ELISA, IF, IHC-P, WB
User Note	Optimal dilutions for each application to be determined by the researcher.

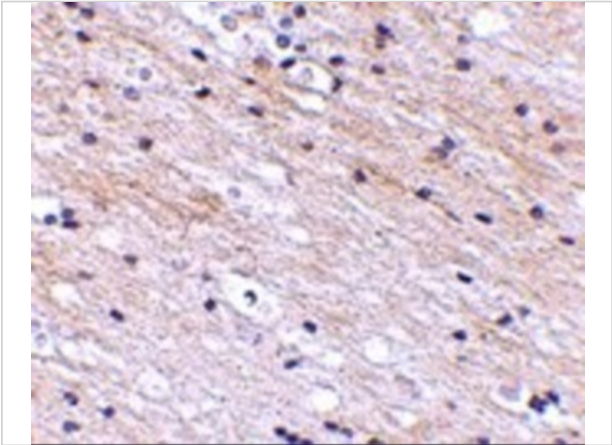
Properties

Purification	SATB1 Antibody is affinity chromatography purified via peptide column.
Clonality	Polyclonal
Isotype	IgG
Physical State	Liquid
Buffer	SATB1 Antibody is supplied in PBS containing 0.02% sodium azide.
Concentration	1 mg/mL
Storage Conditions	SATB1 antibody can be stored at 4°C for three months and -20°C, stable for up to one year. As with all antibodies care should be taken to avoid repeated freeze thaw cycles. Antibodies should not be exposed to prolonged high temperatures.



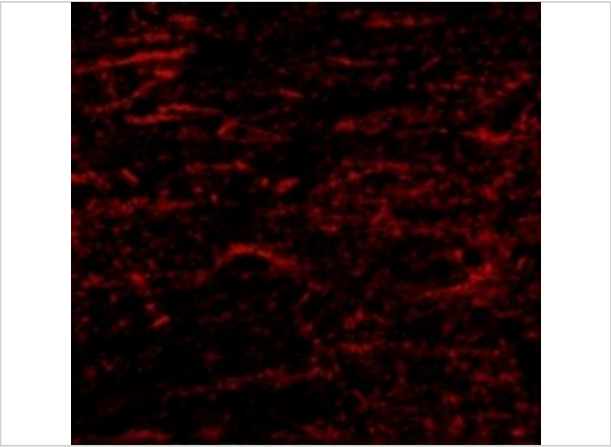
SATB1 Antibody 1

Western blot analysis of SATB1 in SK-N-SH cell lysate with SATB1 antibody at (A) 1 and (B) 2 µg/mL.



SATB1 Antibody 2

Immunohistochemistry of SATB1 in human brain tissue with SATB1 antibody at 2.5 µg/mL.



SATB1 Antibody 3

Immunofluorescence of SATB1(NT) in Human Brain cells with SATB1(NT) antibody at 20 µg/mL.

Disclaimer

Disclaimer	Optimal dilutions/concentrations should be determined by the end user. The information provided is a guideline for product use. This product is for research use only.
------------	--

For research use only. For additional information, visit ProSci's [Terms and Conditions Page](#).