

EVER2 Antibody

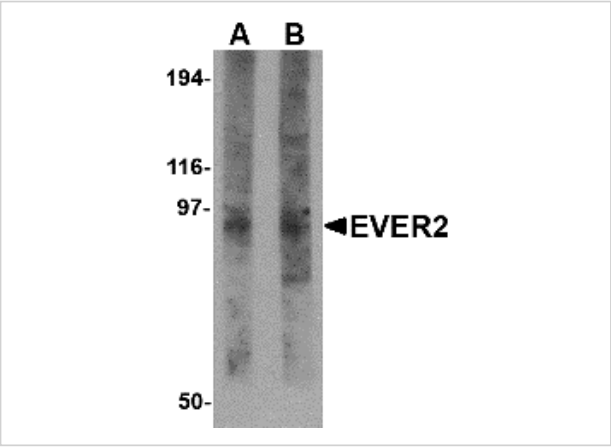
CATALOG NUMBER: 4657

Specifications

Host Species	Rabbit
Species Reactivity	Human, Mouse, Rat
Immunogen	EVER2 antibody was raised against a 18 amino acid synthetic peptide from near the amino terminus of human EVER2. The immunogen is located within amino acids 50 - 100 of EVER2.
Conjugate	Unconjugated
Tested Applications	ELISA, WB
User Note	Optimal dilutions for each application to be determined by the researcher.
Specificity	At least two isoforms of EVER2 are known to exist; this antibody will only recognize the larger isoform. EVER2 has no cross-reactivity to EVER1.

Properties

Purification	EVER2 Antibody is affinity chromatography purified via peptide column.
Clonality	Polyclonal
Isotype	IgG
Physical State	Liquid
Buffer	EVER2 Antibody is supplied in PBS containing 0.02% sodium azide.
Concentration	1 mg/mL
Storage Conditions	EVER2 antibody can be stored at 4°C for three months and -20°C, stable for up to one year. As with all antibodies care should be taken to avoid repeated freeze thaw cycles. Antibodies should not be exposed to prolonged high temperatures.



EVER2 Antibody 1

Western blot analysis of EVER2 in rat thymus tissue lysate with EVER2 antibody at (A) 1 and (B) 2 µg/mL.

Disclaimer

Disclaimer	Optimal dilutions/concentrations should be determined by the end user. The information provided is a guideline for product use. This product is for research use only.
------------	--

For research use only. For additional information, visit ProSci's [Terms and Conditions Page](#).