

## Slc22A17 Antibody

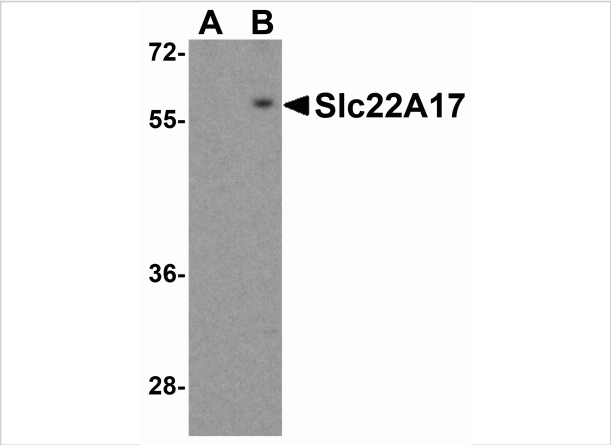
CATALOG NUMBER: 4651

### Specifications

<b>Host Species</b>	Rabbit
<b>Species Reactivity</b>	Human, Mouse, Rat
<b>Homology</b>	Predicted species reactivity based on immunogen sequence: Bovine: (86%)
<b>Immunogen</b>	Slc22A17 antibody was raised against a 14 amino acid synthetic peptide near the carboxy terminus of the human Slc22A17. The immunogen is located within the last 50 amino acids of Slc22A17.
<b>Conjugate</b>	Unconjugated
<b>Tested Applications</b>	ELISA, IF, IHC-P, WB
<b>User Note</b>	Optimal dilutions for each application to be determined by the researcher.
<b>Predicted Molecular Weight</b>	Predicted: 59 kDa Observed: 61 kDa

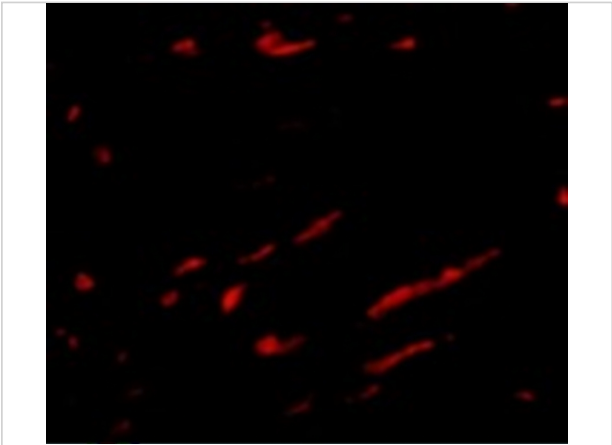
### Properties

<b>Purification</b>	Slc22A17 Antibody is affinity chromatography purified via peptide column.
<b>Clonality</b>	Polyclonal
<b>Isotype</b>	IgG
<b>Physical State</b>	Liquid
<b>Buffer</b>	Slc22A17 Antibody is supplied in PBS containing 0.02% sodium azide.
<b>Concentration</b>	1 mg/mL
<b>Storage Conditions</b>	Slc22A17 antibody can be stored at 4°C for three months and -20°C, stable for up to one year. As with all antibodies care should be taken to avoid repeated freeze thaw cycles. Antibodies should not be exposed to prolonged high temperatures.



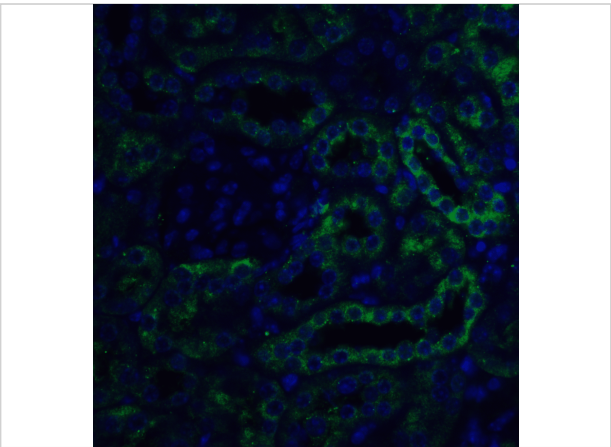
Slc22A17 Antibody 1

Western blot analysis of Slc22A17 in SK-N-SH lysate with Slc22A17 antibody at 0.5 µg/mL in (A) the presence and (B) the absence of blocking peptide.



Slc22A17 Antibody 2

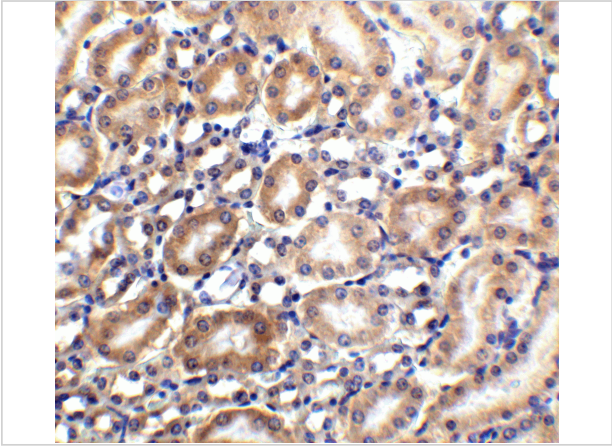
Immunofluorescence of Slc22A17 in rat kidney tissue with Slc22A17 antibody at 20 µg/mL.



Slc22A17 Antibody 3

Immunofluorescence of SLC22A17 in mouse kidney tissue with SLC22A17 antibody at 20 µg/mL.

Green: Slc22A17 Antibody (4651)  
Blue: DAPI staining



Slc22A17 Antibody 4

Immunohistochemistry of SLC22A17 in mouse kidney tissue with SLC22A17 antibody at 2.5 µg/mL.

Disclaimer

Disclaimer	Optimal dilutions/concentrations should be determined by the end user. The information provided is a guideline for product use. This product is for research use only.
------------	--

For research use only. For additional information, visit ProSci's [Terms and Conditions Page](#).