

Wnt10a Antibody

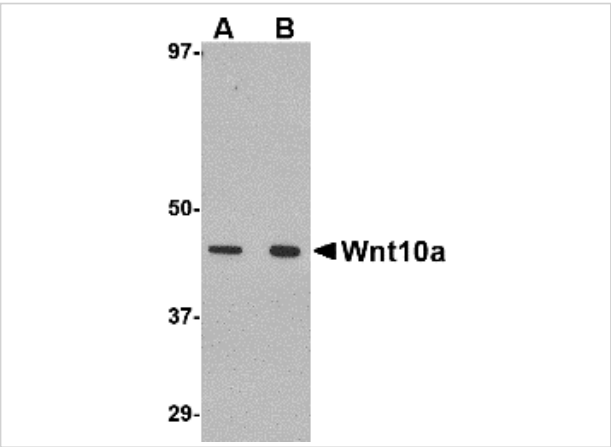
CATALOG NUMBER: 4639

Specifications

Host Species	Rabbit
Species Reactivity	Human, Mouse, Rat
Immunogen	Wnt10a antibody was raised against a 14 amino acid synthetic peptide from near the carboxy terminus of human Wnt10a. The immunogen is located within amino acids 300 - 350 of Wnt10a.
Conjugate	Unconjugated
Tested Applications	ELISA, IF, IHC-P, WB
User Note	Optimal dilutions for each application to be determined by the researcher.
Specificity	This Wnt10a antibody is predicted to not cross-react with Wnt10b.
Predicted Molecular Weight	Predicted: 46 kDa Observed: 46 kDa

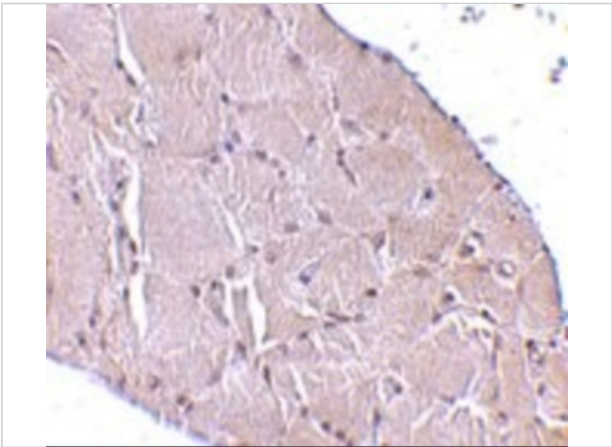
Properties

Purification	Wnt10a Antibody is affinity chromatography purified via peptide column.
Clonality	Polyclonal
Isotype	IgG
Physical State	Liquid
Buffer	Wnt10a Antibody is supplied in PBS containing 0.02% sodium azide.
Concentration	1 mg/mL
Storage Conditions	Wnt10a antibody can be stored at 4°C for three months and -20°C, stable for up to one year. As with all antibodies care should be taken to avoid repeated freeze thaw cycles. Antibodies should not be exposed to prolonged high temperatures.



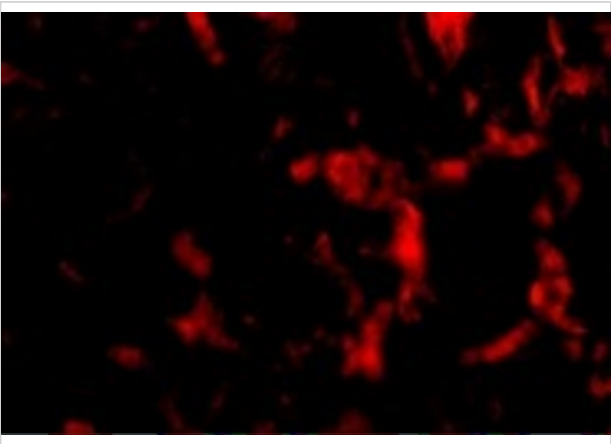
Wnt10a Antibody 1

Western blot analysis of Wnt10a in RAW264.7 cell lysate with Wnt10a antibody at (A) 1 and (B) 2 µg/mL.



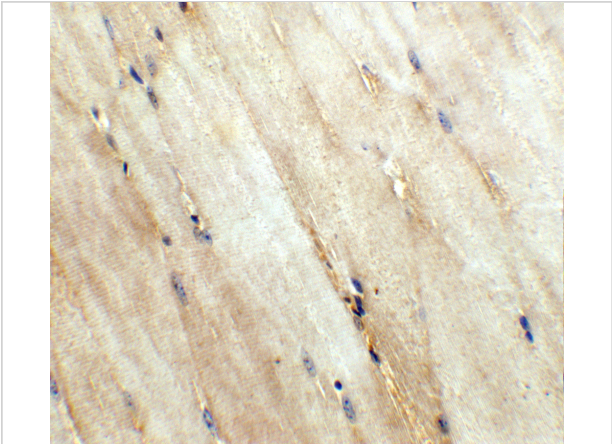
Wnt10a Antibody 2

Immunohistochemistry of Wnt10a in human skeletal muscle tissue with Wnt10a antibody at 10 µg/mL.



Wnt10a Antibody 3

Immunofluorescence of Wnt10a in Human Skeletal Muscle tissue with Wnt10a antibody at 20 µg/mL.



Wnt10a Antibody 4

Immunohistochemistry of Wnt10a in mouse skeletal muscle tissue with Wnt10a antibody at 5 µg/mL.

Disclaimer

Disclaimer	Optimal dilutions/concentrations should be determined by the end user. The information provided is a guideline for product use. This product is for research use only.
------------	--

For research use only. For additional information, visit ProSci's [Terms and Conditions Page](#).