

## SATB2 Antibody

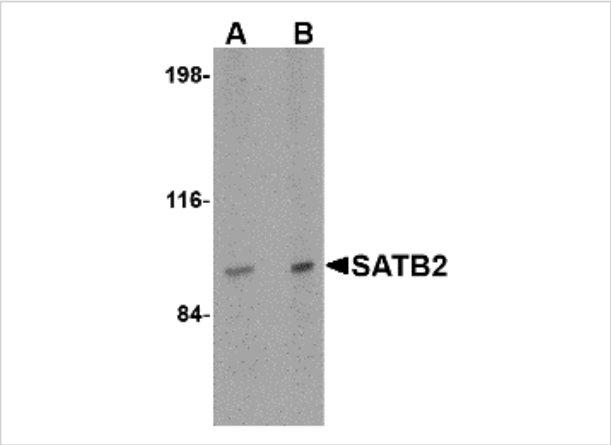
CATALOG NUMBER: 4627

### Specifications

Host Species	Rabbit
Species Reactivity	Human, Mouse, Rat
Immunogen	SATB2 antibody was raised against a 16 amino acid synthetic peptide near the amino terminus of the human SATB2. The immunogen is located within the first 50 amino acids of SATB2.
Conjugate	Unconjugated
Tested Applications	ELISA, IF, IHC-P, WB
User Note	Optimal dilutions for each application to be determined by the researcher.
Specificity	At least two isoforms of SATB2 are known to exist. This SATB2 antibody will not cross-react with SATB1.

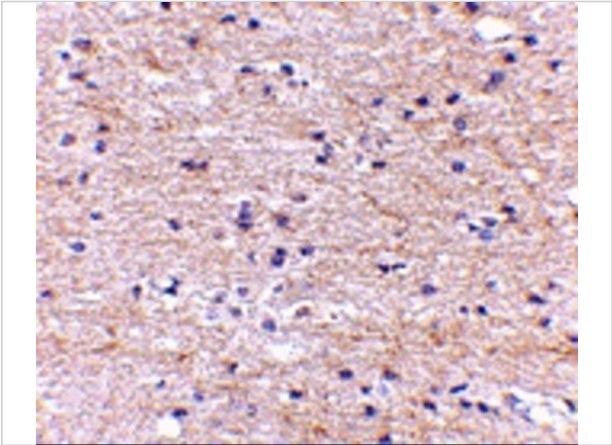
### Properties

Purification	SATB2 Antibody is affinity chromatography purified via peptide column.
Clonality	Polyclonal
Isotype	IgG
Physical State	Liquid
Buffer	SATB2 Antibody is supplied in PBS containing 0.02% sodium azide.
Concentration	1 mg/mL
Storage Conditions	SATB2 antibody can be stored at 4°C for three months and -20°C, stable for up to one year. As with all antibodies care should be taken to avoid repeated freeze thaw cycles. Antibodies should not be exposed to prolonged high temperatures.



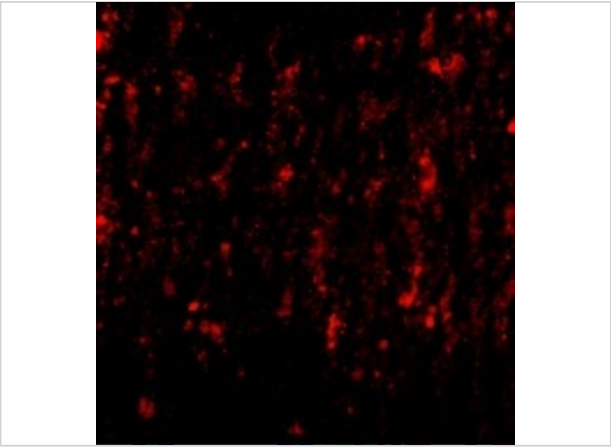
SATB2 Antibody 1

Western blot analysis of SATB2 in mouse brain tissue lysate with SATB2 antibody at (A) 2 and (B) 4 µg/mL.



SATB2 Antibody 2

Immunohistochemistry of SATB2 in human brain with SATB2 antibody at 5 µg/mL.



SATB2 Antibody 3

Immunofluorescence of SATB2 in Human Brain cells with SATB2 antibody at 20 µg/mL.

Disclaimer

Disclaimer	Optimal dilutions/concentrations should be determined by the end user. The information provided is a guideline for product use. This product is for research use only.
------------	--

For research use only. For additional information, visit ProSci's [Terms and Conditions Page](#).