

## SAPAP1 Antibody

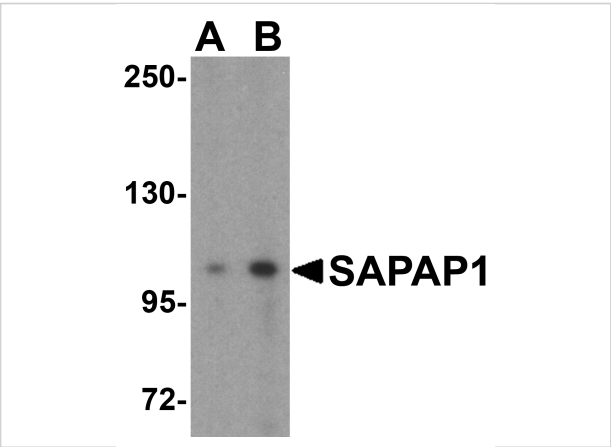
CATALOG NUMBER: 4623

### Specifications

Host Species	Rabbit
Species Reactivity	Human, Mouse, Rat
Immunogen	SAPAP1 antibody was raised against a 18 amino acid synthetic peptide from near the center of human SAPAP1. The immunogen is located within amino acids 640 - 690 of SAPAP1.
Conjugate	Unconjugated
Tested Applications	ELISA, IF, IHC-P, WB
User Note	Optimal dilutions for each application to be determined by the researcher.
Specificity	At least three isoforms of SAPAP1 are known to exist. This SAPAP1 antibody will not cross-react with other SAPAP proteins.

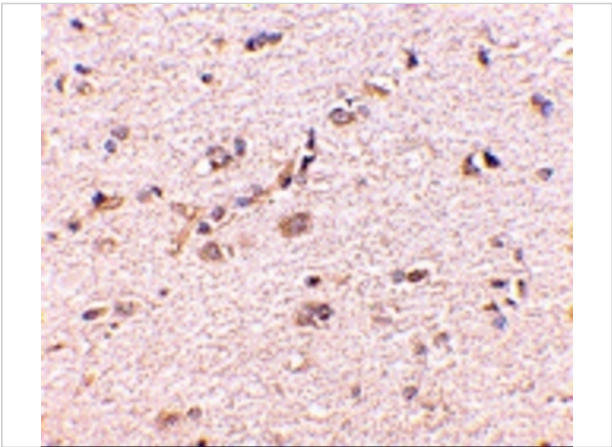
### Properties

Purification	SAPAP1 Antibody is affinity chromatography purified via peptide column.
Clonality	Polyclonal
Isotype	IgG
Physical State	Liquid
Buffer	SAPAP1 Antibody is supplied in PBS containing 0.02% sodium azide.
Concentration	1 mg/mL
Storage Conditions	SAPAP1 antibody can be stored at 4°C for three months and -20°C, stable for up to one year. As with all antibodies care should be taken to avoid repeated freeze thaw cycles. Antibodies should not be exposed to prolonged high temperatures.



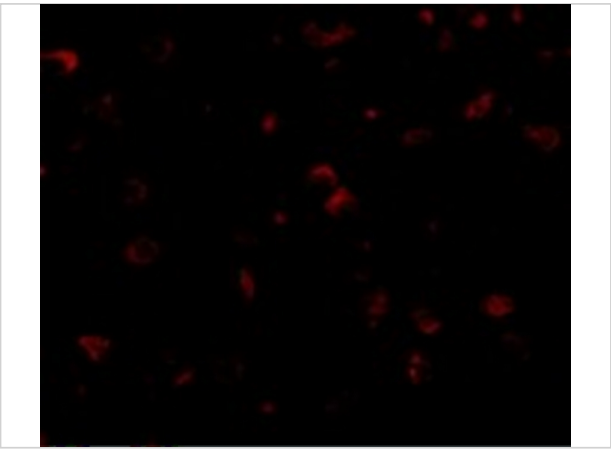
### SAPAP1 Antibody 1

Western blot analysis of SAPAP1 in rat brain tissue lysate with SAPAP1 antibody at (A) 0.5 and (B) 1  $\mu\text{g/mL}$ .



### SAPAP1 Antibody 2

Immunohistochemistry of SAPAP1 in human brain with SAPAP1 antibody at 5  $\mu\text{g/mL}$ .



### SAPAP1 Antibody 3

Immunofluorescence of SAPAP1 in Human Brain cells with SAPAP1 antibody at 20  $\mu\text{g/mL}$ .

## Disclaimer

Disclaimer	Optimal dilutions/concentrations should be determined by the end user. The information provided is a guideline for product use. This product is for research use only.
------------	--

For research use only. For additional information, visit ProSci's [Terms and Conditions Page](#).