

LIMP2 Antibody

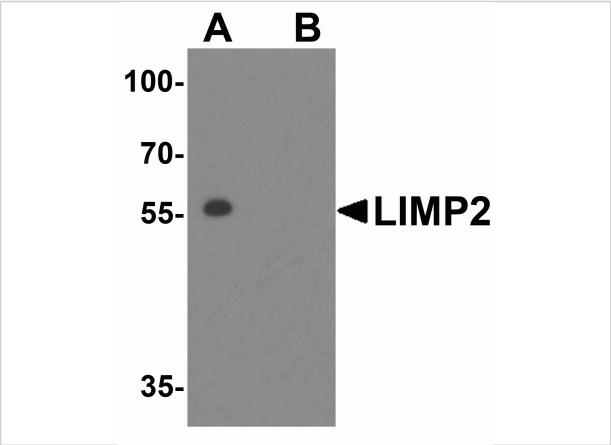
CATALOG NUMBER: 4621

Specifications

Host Species	Rabbit
Species Reactivity	Human, Mouse, Rat
Immunogen	LIMP2 antibody was raised against a 16 amino acid synthetic peptide from near the center of human LIMP2. The immunogen is located within amino acids 70 - 120 of LIMP2.
Conjugate	Unconjugated
Tested Applications	ELISA, IF, IHC-P, WB
User Note	Optimal dilutions for each application to be determined by the researcher.
Predicted Molecular Weight	Predicted: 53 kDa Observed: 57 kDa

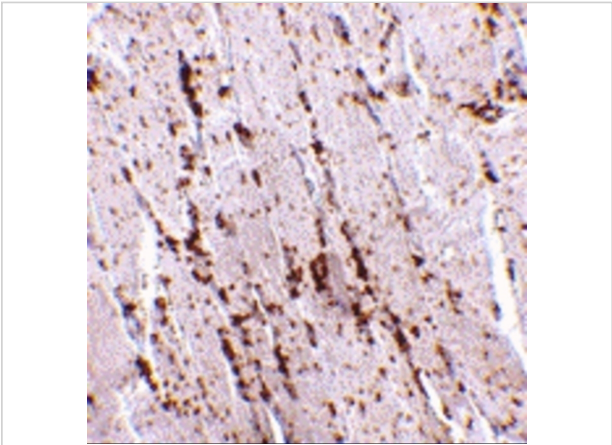
Properties

Purification	LIMP2 Antibody is affinity chromatography purified via peptide column.
Clonality	Polyclonal
Isotype	IgG
Physical State	Liquid
Buffer	LIMP2 Antibody is supplied in PBS containing 0.02% sodium azide.
Concentration	1 mg/mL
Storage Conditions	LIMP2 antibody can be stored at 4°C for three months and -20°C, stable for up to one year. As with all antibodies care should be taken to avoid repeated freeze thaw cycles. Antibodies should not be exposed to prolonged high temperatures.



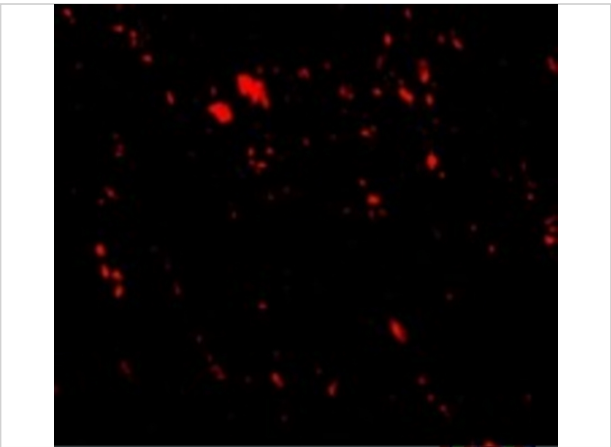
LIMP2 Antibody 1

Western blot analysis of LIMP2 in mouse liver tissue lysate with LIMP2 antibody at 1 µg/mL in (A) the absence and (B) presence of blocking peptide.



LIMP2 Antibody 2

Immunohistochemistry of LIMP2 in human skeletal muscle tissue with LIMP2 antibody at 2.5 µg/mL.



LIMP2 Antibody 3

Immunofluorescence of LIMP2 in Human Skeletal Muscle tissue with LIMP2 antibody at 20 µg/mL.

Disclaimer

Disclaimer	Optimal dilutions/concentrations should be determined by the end user. The information provided is a guideline for product use. This product is for research use only.
------------	--

For research use only. For additional information, visit ProSci's [Terms and Conditions Page](#).