

## Rim2 Antibody

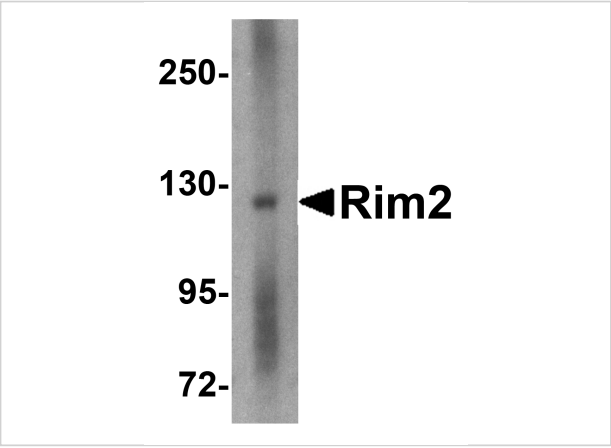
CATALOG NUMBER: 4609

### Specifications

<b>Host Species</b>	Rabbit
<b>Species Reactivity</b>	Human, Mouse, Rat
<b>Immunogen</b>	Rim2 antibody was raised against a 17 amino acid synthetic peptide near the center of the human Rim2. The immunogen is located within amino acids 250 - 300 of Rim2.
<b>Conjugate</b>	Unconjugated
<b>Tested Applications</b>	ELISA, IF, IHC-P, WB
<b>User Note</b>	Optimal dilutions for each application to be determined by the researcher.
<b>Specificity</b>	Multiple isoforms of RIM2 are known to exist. This antibody is predicted to have no cross-reactivity to other Rim proteins.
<b>Predicted Molecular Weight</b>	Predicted: 39, 128, 148, 170 kDa Observed: 128 kDa

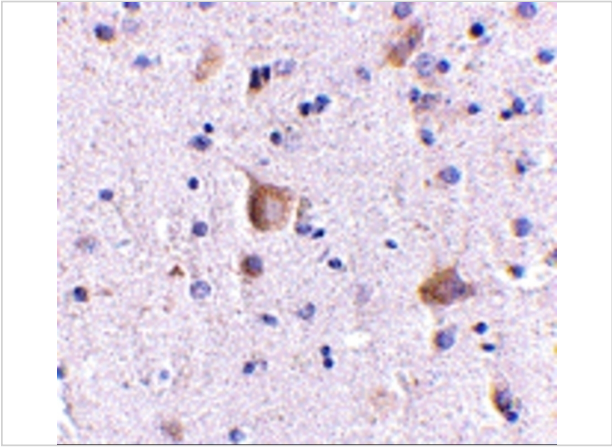
### Properties

<b>Purification</b>	Rim2 Antibody is affinity chromatography purified via peptide column.
<b>Clonality</b>	Polyclonal
<b>Isotype</b>	IgG
<b>Physical State</b>	Liquid
<b>Buffer</b>	Rim2 Antibody is supplied in PBS containing 0.02% sodium azide.
<b>Concentration</b>	1 mg/mL
<b>Storage Conditions</b>	Rim2 antibody can be stored at 4°C for three months and -20°C, stable for up to one year. As with all antibodies care should be taken to avoid repeated freeze thaw cycles. Antibodies should not be exposed to prolonged high temperatures.



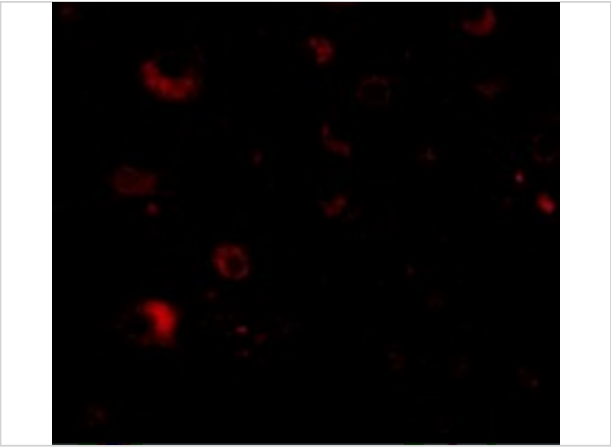
Rim2 Antibody 1

Western blot analysis of Rim2 in human brain tissue lysate with Rim2 antibody at 1 µg/mL.



Rim2 Antibody 2

Immunohistochemistry of Rim2 in human brain with Rim2 antibody at 5 µg/mL.



Rim2 Antibody 3

Immunofluorescence of Rim2 in Human Brain tissue with Rim2 antibody at 20 µg/mL.

Disclaimer

Disclaimer	Optimal dilutions/concentrations should be determined by the end user. The information provided is a guideline for product use. This product is for research use only.
------------	--

For research use only. For additional information, visit ProSci's [Terms and Conditions Page](#).