

## Slc35D1 Antibody

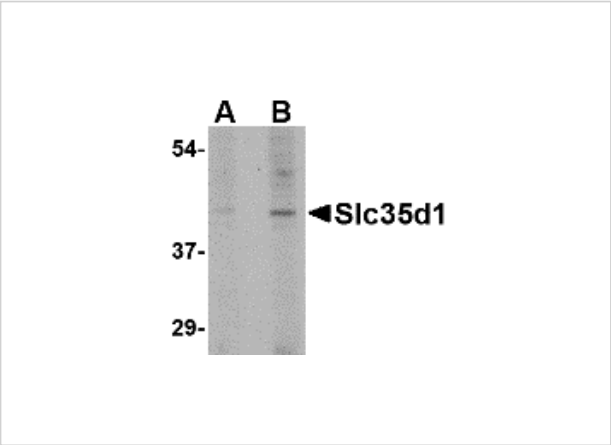
CATALOG NUMBER: 4607

### Specifications

Host Species	Rabbit
Species Reactivity	Human
Homology	Predicted species reactivity based on immunogen sequence: Bovine: (86%), Pig: (86%)
Immunogen	Slc35D1 antibody was raised against a 20 amino acid synthetic peptide near the carboxy terminus of the human Slc35D1. The immunogen is located within the last 50 amino acids of Slc35D1.
Conjugate	Unconjugated
Tested Applications	ELISA, ICC, WB
User Note	Optimal dilutions for each application to be determined by the researcher.
Specificity	This antibody is predicted to not cross-react with the highly homologous Slc35D2.

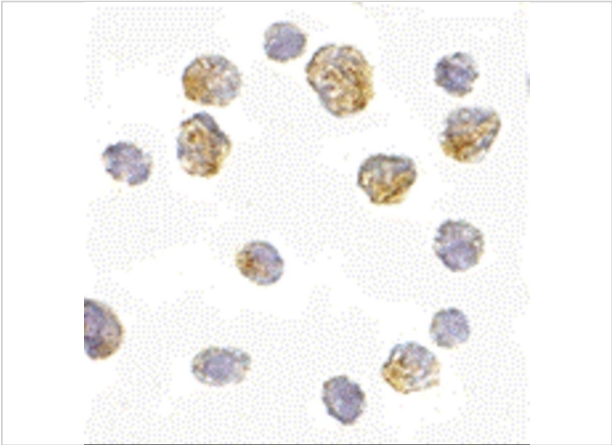
### Properties

Purification	Slc35D1 Antibody is affinity chromatography purified via peptide column.
Clonality	Polyclonal
Isotype	IgG
Physical State	Liquid
Buffer	Slc35D1 Antibody is supplied in PBS containing 0.02% sodium azide.
Concentration	1 mg/mL
Storage Conditions	Slc35D1 antibody can be stored at 4°C for three months and -20°C, stable for up to one year. As with all antibodies care should be taken to avoid repeated freeze thaw cycles. Antibodies should not be exposed to prolonged high temperatures.



Slc35D1 Antibody 1

Western blot analysis of Slc35D1 in Daudi lysate with Slc35D1 antibody at (A) 1 and (B) 2 µg/mL.



Slc35D1 Antibody 2

Immunocytochemistry of Slc35D1 in Daudi cells with Slc35D1 antibody at 5 µg/mL.

Disclaimer

Disclaimer	Optimal dilutions/concentrations should be determined by the end user. The information provided is a guideline for product use. This product is for research use only.
------------	--

For research use only. For additional information, visit ProSci's [Terms and Conditions Page](#).