

G RTP1 Antibody

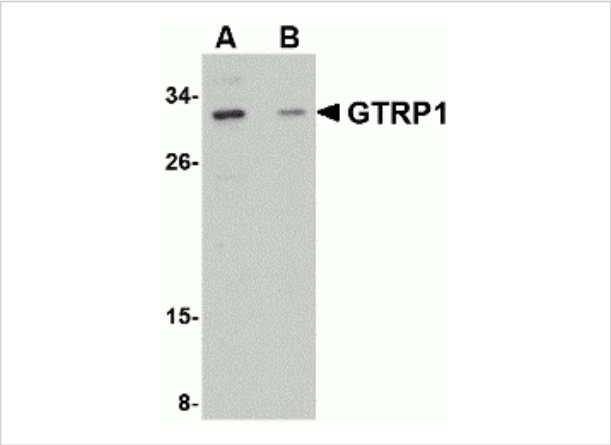
CATALOG NUMBER: 4591

Specifications

Host Species	Rabbit
Species Reactivity	Human, Mouse, Rat
Immunogen	GRTP1 antibody was raised against a 16 amino acid synthetic peptide from near the center of human GRTP1. The immunogen is located within amino acids 80 - 130 of GRTP1.
Conjugate	Unconjugated
Tested Applications	ELISA, WB
User Note	Optimal dilutions for each application to be determined by the researcher.
Specificity	At least three isoforms of GRTP1 are known to exist; this antibody should recognize all isoforms.

Properties

Purification	GRTP1 Antibody is affinity chromatography purified via peptide column.
Clonality	Polyclonal
Isotype	IgG
Physical State	Liquid
Buffer	GRTP1 Antibody is supplied in PBS containing 0.02% sodium azide.
Concentration	1 mg/mL
Storage Conditions	GRTP1 antibody can be stored at 4°C for three months and -20°C, stable for up to one year. As with all antibodies care should be taken to avoid repeated freeze thaw cycles. Antibodies should not be exposed to prolonged high temperatures.



GRTP1 Antibody 1

Western blot analysis of GRTP1 in SK-N-SH cell lysate with GRTP1 antibody at 1 µg/mL in the (A) absence and (B) presence of blocking peptide.

Disclaimer

Disclaimer	Optimal dilutions/concentrations should be determined by the end user. The information provided is a guideline for product use. This product is for research use only.
------------	--

For research use only. For additional information, visit ProSci's [Terms and Conditions Page](#).