

GRTP1 Antibody

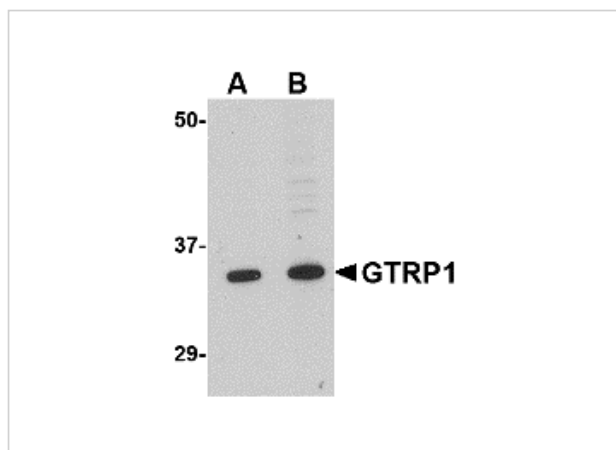
CATALOG NUMBER: 4589

Specifications

Host Species	Rabbit
Species Reactivity	Human, Mouse, Rat
Immunogen	GRTP1 antibody was raised against a 18 amino acid synthetic peptide from near the amino terminus of human GRTP1. The immunogen is located within the first 50 amino acids of GRTP1.
Conjugate	Unconjugated
Tested Applications	ELISA, ICC, IF, WB
User Note	Optimal dilutions for each application to be determined by the researcher.

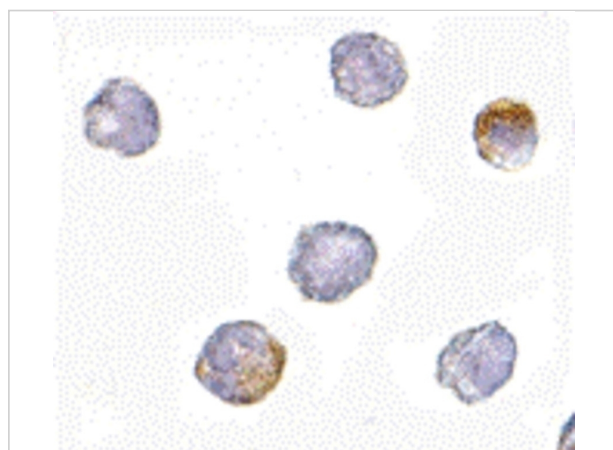
Properties

Purification	GRTP1 Antibody is affinity chromatography purified via peptide column.
Clonality	Polyclonal
Isotype	IgG
Physical State	Liquid
Buffer	GRTP1 Antibody is supplied in PBS containing 0.02% sodium azide.
Concentration	1 mg/mL
Storage Conditions	GRTP1 antibody can be stored at 4°C for three months and -20°C, stable for up to one year. As with all antibodies care should be taken to avoid repeated freeze thaw cycles. Antibodies should not be exposed to prolonged high temperatures.



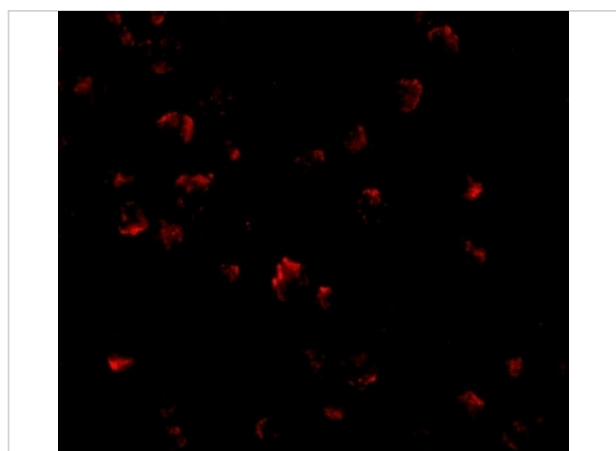
GRTP1 Antibody 1

Western blot analysis of GRTP1 in K562 cell lysate with GRTP1 antibody at (A) 1 and (B) 2 $\mu\text{g/mL}$.



GRTP1 Antibody 2

Immunocytochemistry of GRTP1 in K562 cells with GRTP1 antibody at 2.5 $\mu\text{g/mL}$.



GRTP1 Antibody 3

Immunofluorescence of GRTP1 in K562 cells with GRTP1 antibody at 20 $\mu\text{g/mL}$.

Disclaimer

Disclaimer

Optimal dilutions/concentrations should be determined by the end user. The information provided is a guideline for product use. This product is for research use only.

For research use only. For additional information, visit ProSci's [Terms and Conditions Page](#).