

CAPS1 Antibody

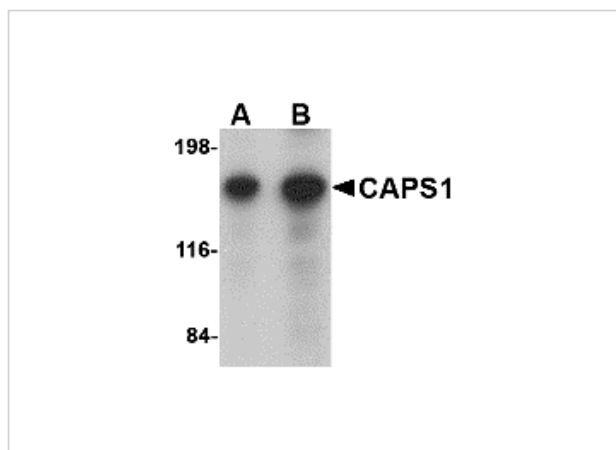
CATALOG NUMBER: 4561

Specifications

Host Species	Rabbit
Species Reactivity	Human, Mouse, Rat
Homology	Predicted species reactivity based on immunogen sequence: Bovine: (86%)
Immunogen	CAPS1 antibody was raised against a 21 amino acid synthetic peptide near the amino terminus of the human CAPS1. The immunogen is located within amino acids 90 - 140 of CAPS1.
Conjugate	Unconjugated
Tested Applications	ELISA, IF, IHC-P, WB
User Note	Optimal dilutions for each application to be determined by the researcher.
Specificity	Numerous isoforms of CAPS1 are known to exist. This CAPS1 antibody is predicted to be specific to CAPS1 and not recognize CAPS2.

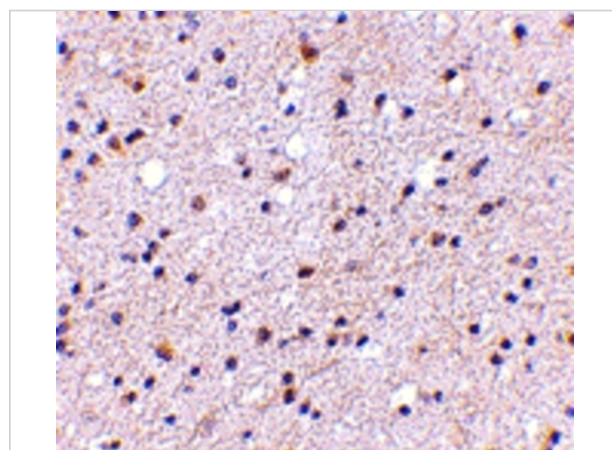
Properties

Purification	CAPS1 Antibody is affinity chromatography purified via peptide column.
Clonality	Polyclonal
Isotype	IgG
Physical State	Liquid
Buffer	CAPS1 Antibody is supplied in PBS containing 0.02% sodium azide.
Concentration	1 mg/mL
Storage Conditions	CAPS1 antibody can be stored at 4°C for three months and -20°C, stable for up to one year. As with all antibodies care should be taken to avoid repeated freeze thaw cycles. Antibodies should not be exposed to prolonged high temperatures.



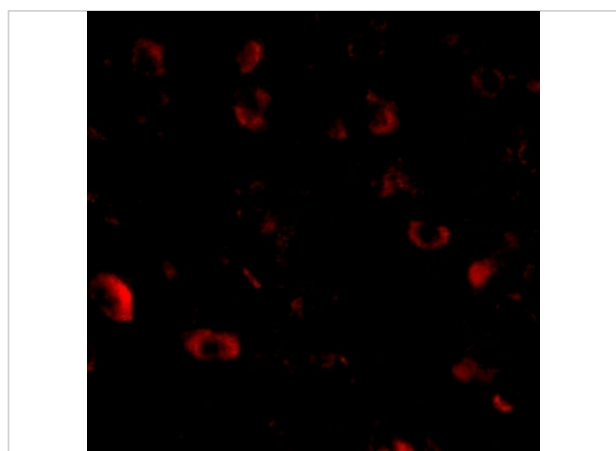
CAPS1 Antibody 1

Western blot analysis of CAPS1 in rat brain tissue lysate with CAPS1 antibody at (A) 0.25 and (B) 0.5 $\mu\text{g/mL}$.



CAPS1 Antibody 2

Immunohistochemistry of CAPS1 in human brain with CAPS1 antibody at 5 $\mu\text{g/mL}$.



CAPS1 Antibody 3

Immunofluorescence of CAPS1 in human brain tissue with CAPS1 antibody at 20 $\mu\text{g/mL}$.

Disclaimer

Disclaimer

Optimal dilutions/concentrations should be determined by the end user. The information provided is a guideline for product use. This product is for research use only.

For research use only. For additional information, visit ProSci's [Terms and Conditions Page](#).