

IRGM Antibody

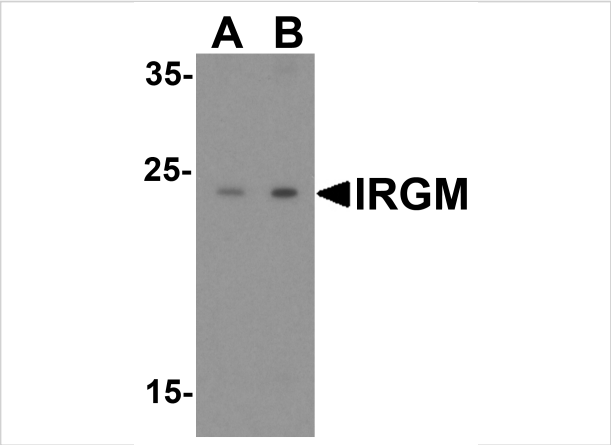
CATALOG NUMBER: 4545

Specifications

Host Species	Rabbit
Species Reactivity	Human, Mouse, Rat
Immunogen	IRGM antibody was raised against a 14 amino acid synthetic peptide near the center of the human IRGM. The immunogen is located within the last 50 amino acids of IRGM.
Conjugate	Unconjugated
Tested Applications	ELISA, IF, IHC-P, WB
User Note	Optimal dilutions for each application to be determined by the researcher.
Specificity	IRGM antibody may recognize mouse IRGM2 and IRGM3.
Predicted Molecular Weight	Predicted: 20 kDa Observed: 24 kDa

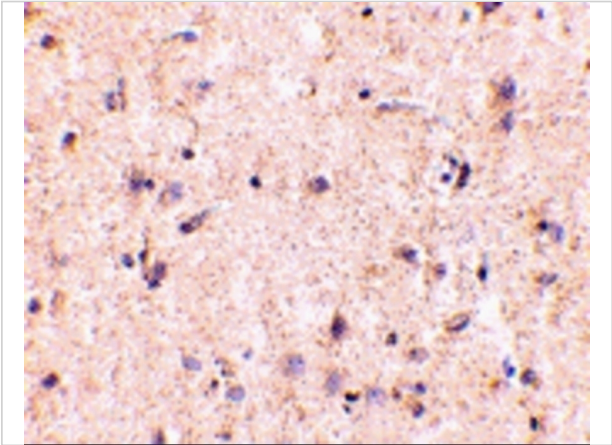
Properties

Purification	IRGM Antibody is affinity chromatography purified via peptide column.
Clonality	Polyclonal
Isotype	IgG
Physical State	Liquid
Buffer	IRGM Antibody is supplied in PBS containing 0.02% sodium azide.
Concentration	1 mg/mL
Storage Conditions	IRGM antibody can be stored at 4°C for three months and -20°C, stable for up to one year. As with all antibodies care should be taken to avoid repeated freeze thaw cycles. Antibodies should not be exposed to prolonged high temperatures.



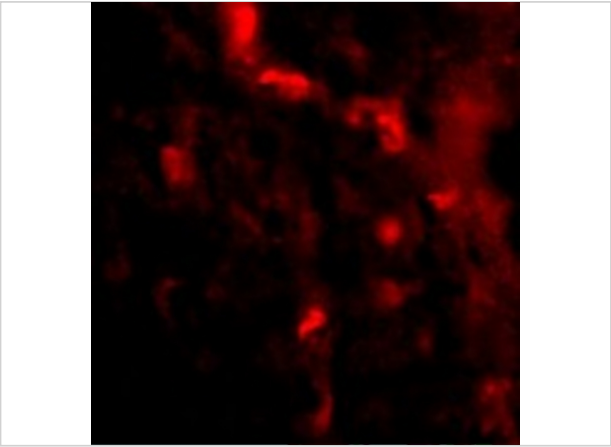
IRGM Antibody 1

Western blot analysis of IRGM in human brain lysate with IRGM antibody at (A) 1 and (B) 2 $\mu\text{g/mL}$.



IRGM Antibody 2

Immunohistochemistry of IRGM in human brain tissue with IRGM antibody at 5 $\mu\text{g/mL}$.



IRGM Antibody 3

Immunofluorescence of IRGM in Human Brain tissue with IRGM antibody at 20 $\mu\text{g/mL}$.

Disclaimer

Disclaimer	Optimal dilutions/concentrations should be determined by the end user. The information provided is a guideline for product use. This product is for research use only.
-------------------	--

For research use only. For additional information, visit ProSci's [Terms and Conditions Page](#).