

NIPSNAP Antibody

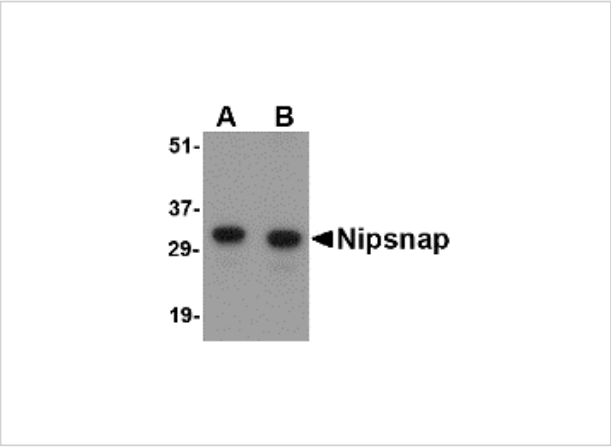
CATALOG NUMBER: 4537

Specifications

Host Species	Rabbit
Species Reactivity	Human, Mouse, Rat
Immunogen	NIPSNAP antibody was raised against a 19 amino acid synthetic peptide from near the center of human NIPSNAP. The immunogen is located within amino acids 130 - 180 of NIPSNAP.
Conjugate	Unconjugated
Tested Applications	ELISA, IF, IHC-P, WB
User Note	Optimal dilutions for each application to be determined by the researcher.

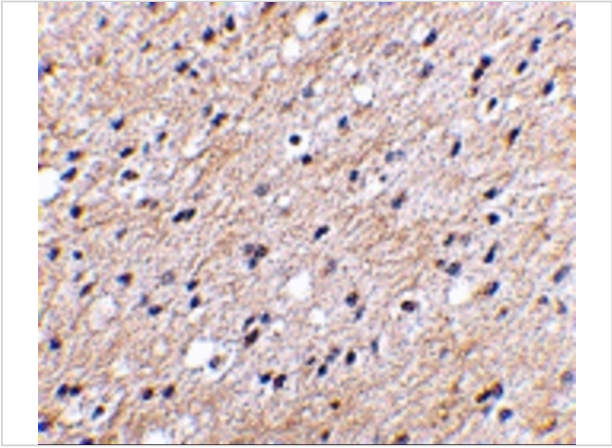
Properties

Purification	NIPSNAP Antibody is affinity chromatography purified via peptide column.
Clonality	Polyclonal
Isotype	IgG
Physical State	Liquid
Buffer	NIPSNAP Antibody is supplied in PBS containing 0.02% sodium azide.
Concentration	1 mg/mL
Storage Conditions	NIPSNAP antibody can be stored at 4°C for three months and -20°C, stable for up to one year. As with all antibodies care should be taken to avoid repeated freeze thaw cycles. Antibodies should not be exposed to prolonged high temperatures.



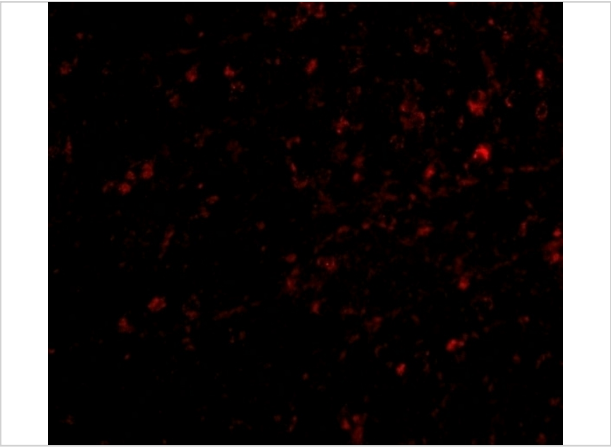
NIPSNAP Antibody 1

Western blot analysis of NIPSNAP in human brain tissue lysate with NIPSNAP antibody at (A) 0.5 and (B) 1 $\mu\text{g/mL}$.



NIPSNAP Antibody 2

Immunohistochemical staining of human brain tissue using Nipsnap antibody at 2.5 $\mu\text{g/mL}$.



NIPSNAP Antibody 3

Immunofluorescence of nipsnap in human brain tissue with nipsnap antibody at 20 $\mu\text{g/mL}$.

Disclaimer

Disclaimer	Optimal dilutions/concentrations should be determined by the end user. The information provided is a guideline for product use. This product is for research use only.
------------	--

For research use only. For additional information, visit ProSci's [Terms and Conditions Page](#).