

## RTP801 Antibody

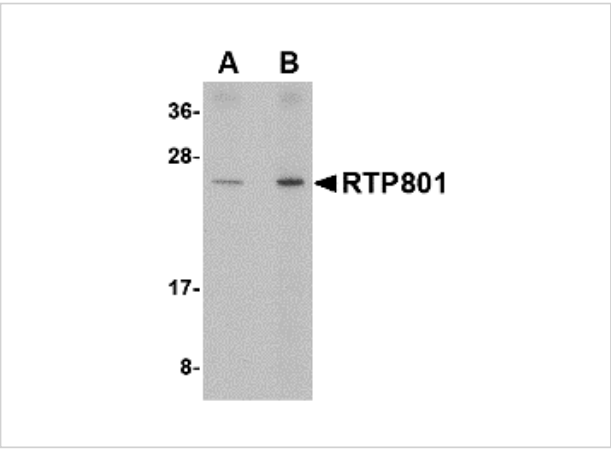
CATALOG NUMBER: 4495

### Specifications

Host Species	Rabbit
Species Reactivity	Human, Mouse, Rat
Homology	Predicted species reactivity based on immunogen sequence: Bovine: (100%)
Immunogen	RTP801 antibody was raised against a 12 amino acid synthetic peptide from near the center of human RTP801. The immunogen is located within amino acids 90 - 140 of RTP801.
Conjugate	Unconjugated
Tested Applications	ELISA, IF, IHC-P, WB
User Note	Optimal dilutions for each application to be determined by the researcher.

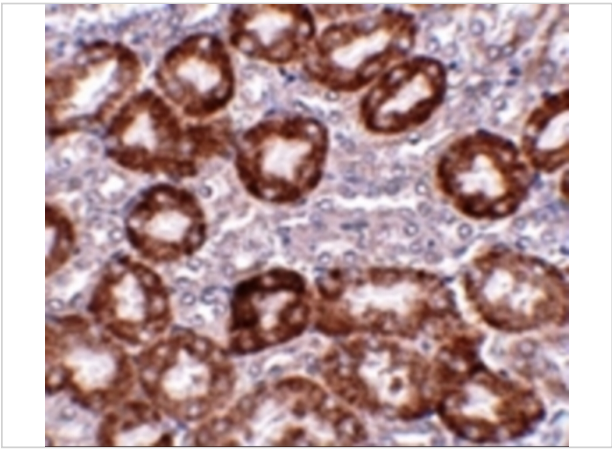
### Properties

Purification	RTP801 Antibody is affinity chromatography purified via peptide column.
Clonality	Polyclonal
Isotype	IgG
Physical State	Liquid
Buffer	RTP801 Antibody is supplied in PBS containing 0.02% sodium azide.
Concentration	1 mg/mL
Storage Conditions	RTP801 antibody can be stored at 4°C for three months and -20°C, stable for up to one year. As with all antibodies care should be taken to avoid repeated freeze thaw cycles. Antibodies should not be exposed to prolonged high temperatures.



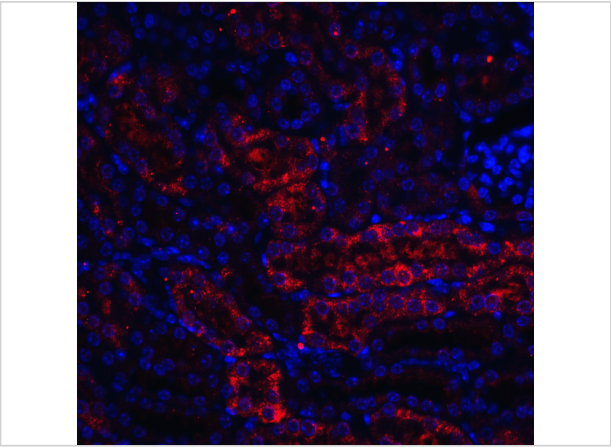
### RTP801 Antibody 1

Western blot analysis of RTP801 in human kidney tissue lysate with RTP801 antibody at (A) 0.5 and (B) 1  $\mu\text{g/mL}$ .



### RTP801 Antibody 2

Immunohistochemistry of RTP801 in mouse kidney tissue with RTP801 antibody at 5  $\mu\text{g/mL}$ .



### RTP801 Antibody 3

Immunofluorescence of RTP801 in mouse kidney tissue with RTP801 antibody at 20  $\mu\text{g/mL}$ .

Red: RTP801 Antibody (4495)  
Blue: DAPI staining

## Disclaimer

Disclaimer	Optimal dilutions/concentrations should be determined by the end user. The information provided is a guideline for product use. This product is for research use only.
------------	--

For research use only. For additional information, visit ProSci's [Terms and Conditions Page](#).