

Slitrk5 Antibody

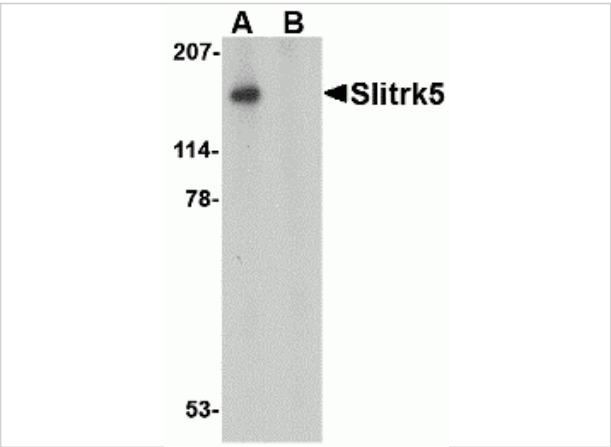
CATALOG NUMBER: 4475

Specifications

Host Species	Rabbit
Species Reactivity	Human, Mouse, Rat
Immunogen	Slitrk5 antibody was raised against a 14 amino acid synthetic peptide from near the center of human Slitrk5. The immunogen is located within amino acids 310 - 360 of Slitrk5.
Conjugate	Unconjugated
Tested Applications	ELISA, IF, IHC-P, WB
User Note	Optimal dilutions for each application to be determined by the researcher.
Specificity	This antibody is predicted to have no cross-reactivity to other Slitrk proteins.

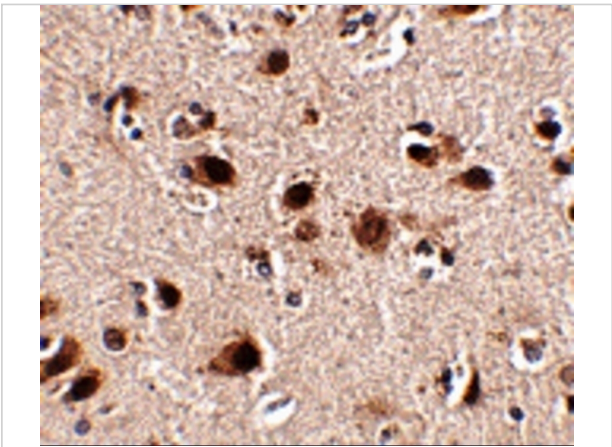
Properties

Purification	Slitrk5 Antibody is affinity chromatography purified via peptide column.
Clonality	Polyclonal
Isotype	IgG
Physical State	Liquid
Buffer	Slitrk5 Antibody is supplied in PBS containing 0.02% sodium azide.
Concentration	1 mg/mL
Storage Conditions	Slitrk5 antibody can be stored at 4°C for three months and -20°C, stable for up to one year. As with all antibodies care should be taken to avoid repeated freeze thaw cycles. Antibodies should not be exposed to prolonged high temperatures.



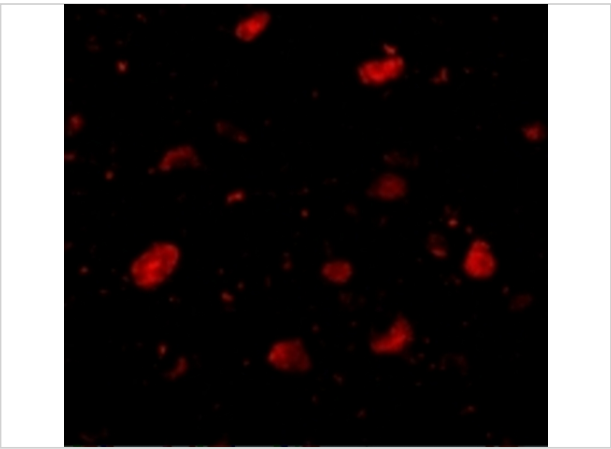
Slitrk5 Antibody 1

Western blot analysis of Slitrk5 in 3T3 cell lysate with Slitrk5 antibody at 1 µg/mL in the (A) absence or (B) presence of blocking peptide.



Slitrk5 Antibody 2

Immunohistochemistry of Slitrk4 in human brain tissue with Slitrk4 antibody at 2.5 µg/mL.



Slitrk5 Antibody 3

Immunofluorescence of Slitrk5 in Human Brain cells with Slitrk5 antibody at 5 µg/mL.

Disclaimer

Disclaimer	Optimal dilutions/concentrations should be determined by the end user. The information provided is a guideline for product use. This product is for research use only.
------------	------------------------------------------------------------------------------------------------------------------------------------------------------------------------

For research use only. For additional information, visit ProSci's [Terms and Conditions Page](#).