

Slitrk3 Antibody

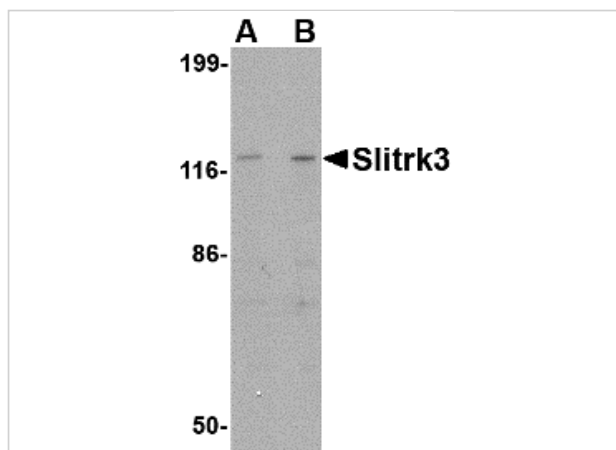
CATALOG NUMBER: 4461

Specifications

Host Species	Rabbit
Species Reactivity	Human, Mouse
Immunogen	Slitrk3 antibody was raised against a 14 amino acid synthetic peptide from near the carboxy terminus of human Slitrk3. The immunogen is located within amino acids 780 - 830 of Slitrk3.
Conjugate	Unconjugated
Tested Applications	ELISA, IF, IHC-P, WB
User Note	Optimal dilutions for each application to be determined by the researcher.
Specificity	This antibody is predicted to have no cross-reactivity to other Slitrk proteins.

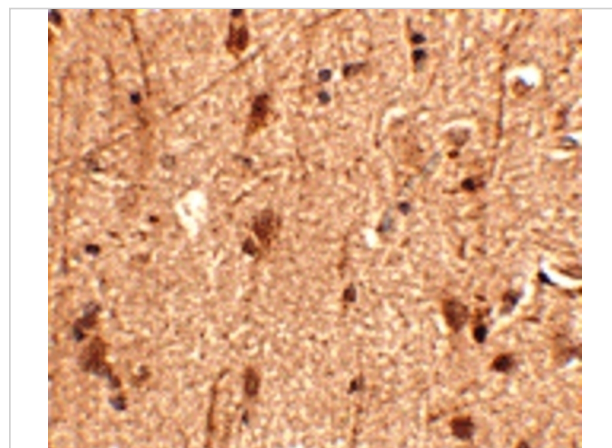
Properties

Purification	Slitrk3 Antibody is affinity chromatography purified via peptide column.
Clonality	Polyclonal
Isotype	IgG
Physical State	Liquid
Buffer	Slitrk3 Antibody is supplied in PBS containing 0.02% sodium azide.
Concentration	1 mg/mL
Storage Conditions	Slitrk3 antibody can be stored at 4°C for three months and -20°C, stable for up to one year. As with all antibodies care should be taken to avoid repeated freeze thaw cycles. Antibodies should not be exposed to prolonged high temperatures.



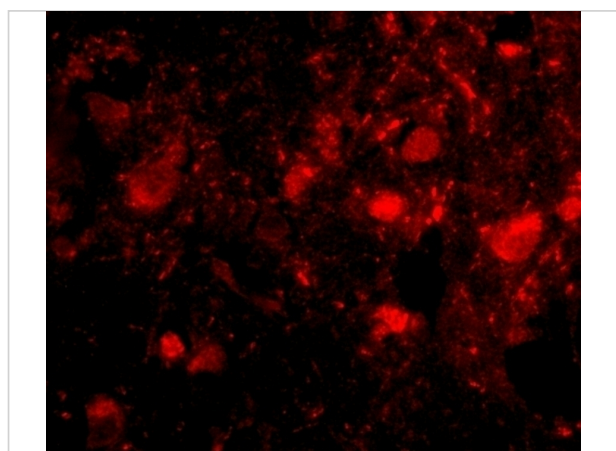
Slitrk3 Antibody 1

Western blot analysis of Slitrk3 in SK-N-SH cell lysate with Slitrk3 antibody at (A) 0.25 and (B) 0.5 $\mu\text{g/mL}$.



Slitrk3 Antibody 2

Immunohistochemistry of Slitrk3 in human brain tissue with Slitrk3 antibody at 2.5 $\mu\text{g/mL}$.



Slitrk3 Antibody 3

Immunofluorescence of Slitrk3 in human brain tissue with Slitrk3 antibody at 20 $\mu\text{g/mL}$.

Disclaimer

Disclaimer

Optimal dilutions/concentrations should be determined by the end user. The information provided is a guideline for product use. This product is for research use only.

For research use only. For additional information, visit ProSci's [Terms and Conditions Page](#).