

## RIM2 Antibody

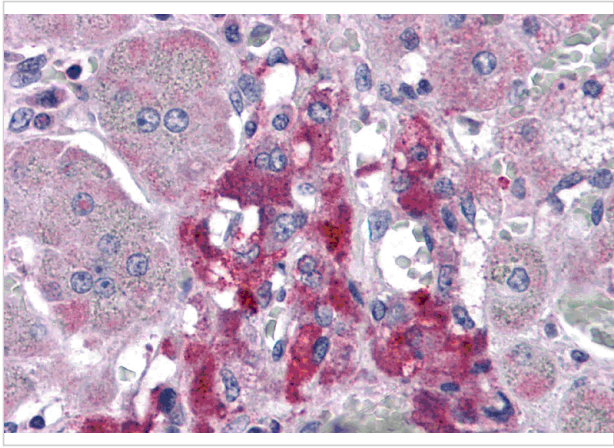
CATALOG NUMBER: 4445

### Specifications

Host Species	Rabbit
Species Reactivity	Human
Homology	Predicted species reactivity based on immunogen sequence: Rat: (100%), Mouse: (100%)
Immunogen	RIM2 antibody was raised against a 16 amino acid peptide near the carboxy terminus of human RIM2. The immunogen is located within amino acids 30 - 80 of RIM2.
Conjugate	Unconjugated
Tested Applications	ELISA, IHC-P
User Note	Optimal dilutions for each application to be determined by the researcher.
Predicted Molecular Weight	Predicted: 148 kDa

### Properties

Purification	RIM2 Antibody is affinity chromatography purified via peptide column.
Clonality	Polyclonal
Isotype	IgG
Physical State	Liquid
Buffer	RIM2 Antibody is supplied in PBS containing 0.02% sodium azide.
Concentration	1 mg/mL
Storage Conditions	RIM2 antibody can be stored at 4°C for three months and -20°C, stable for up to one year.



## RIM2 Antibody 1

Immunohistochemistry of RIM2 in human adrenal gland tissue with RIM2 antibody at 5 µg/mL.

## Disclaimer

Disclaimer	Optimal dilutions/concentrations should be determined by the end user. The information provided is a guideline for product use. This product is for research use only.
------------	--

For research use only. For additional information, visit ProSci's [Terms and Conditions Page](#).