

## FGF4 Antibody

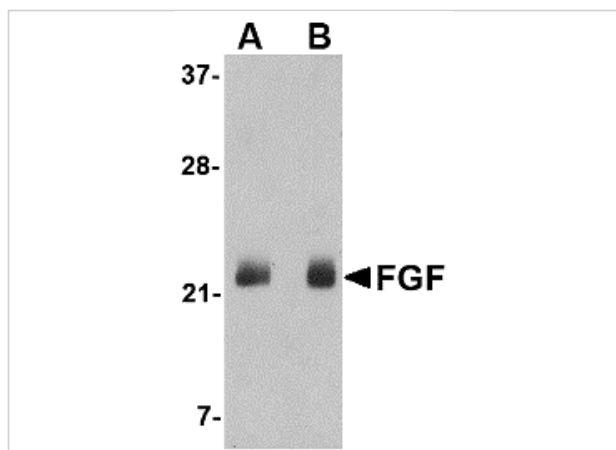
CATALOG NUMBER: 4433

### Specifications

Host Species	Rabbit
Species Reactivity	Human, Mouse
Homology	Predicted species reactivity based on immunogen sequence: Bovine: (94%), Chicken: (88%)
Immunogen	FGF4 antibody was raised against a 18 amino acid synthetic peptide near the carboxy terminus of the human FGF4. The immunogen is located within the last 50 amino acids of FGF4.
Conjugate	Unconjugated
Tested Applications	ELISA, ICC, IF, WB
User Note	Optimal dilutions for each application to be determined by the researcher.

### Properties

Purification	FGF4 Antibody is affinity chromatography purified via peptide column.
Clonality	Polyclonal
Isotype	IgG
Physical State	Liquid
Buffer	FGF4 Antibody is supplied in PBS containing 0.02% sodium azide.
Concentration	1 mg/mL
Storage Conditions	FGF4 antibody can be stored at 4°C for three months and -20°C, stable for up to one year. As with all antibodies care should be taken to avoid repeated freeze thaw cycles. Antibodies should not be exposed to prolonged high temperatures.



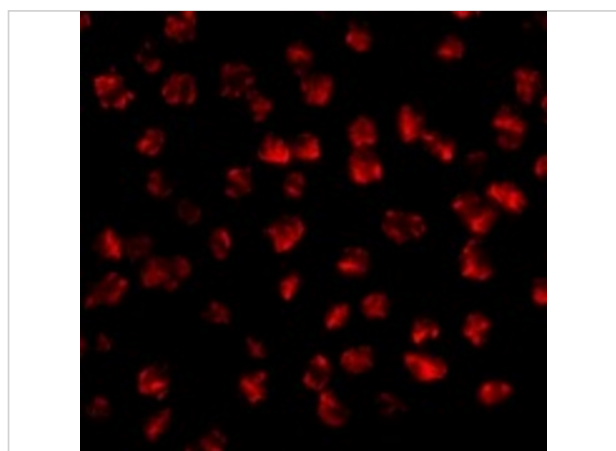
### FGF4 Antibody 1

Western blot analysis of FGF4 in NIH 3T3 cell lysate with FGF4 antibody at (A) 0.5 and (B) 1  $\mu\text{g/mL}$ .



### FGF4 Antibody 2

Immunocytochemistry of FGF4 in 3T3 cells with FGF4 antibody at 2.5  $\mu\text{g/mL}$ .



### FGF4 Antibody 3

Immunofluorescence of FGF4 in 3T3 cells with FGF4 antibody at 2.5  $\mu\text{g/mL}$ .

## Disclaimer

#### Disclaimer

Optimal dilutions/concentrations should be determined by the end user. The information provided is a guideline for product use. This product is for research use only.

For research use only. For additional information, visit ProSci's [Terms and Conditions Page](#).