

Cathelicidin Antibody

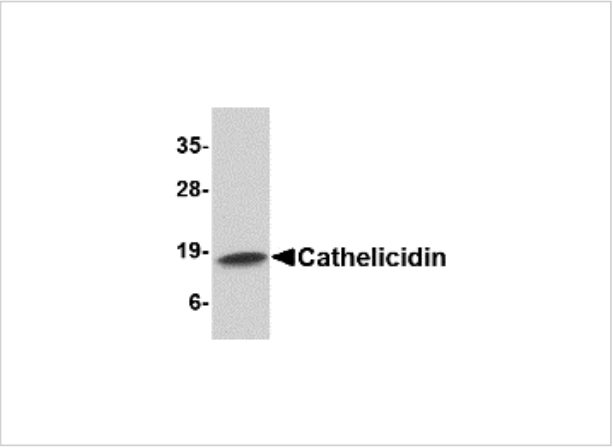
CATALOG NUMBER: 4429

Specifications

Host Species	Rabbit
Species Reactivity	Human
Immunogen	Cathelicidin antibody was raised against a 17 amino acid synthetic peptide near the center of the human Cathelicidin. The immunogen is located within amino acids 50 - 100 of Cathelicidin.
Conjugate	Unconjugated
Tested Applications	ELISA, IF, IHC-P, WB
User Note	Optimal dilutions for each application to be determined by the researcher.
Predicted Molecular Weight	Predicted: 19 kDa Observed: 18 kDa

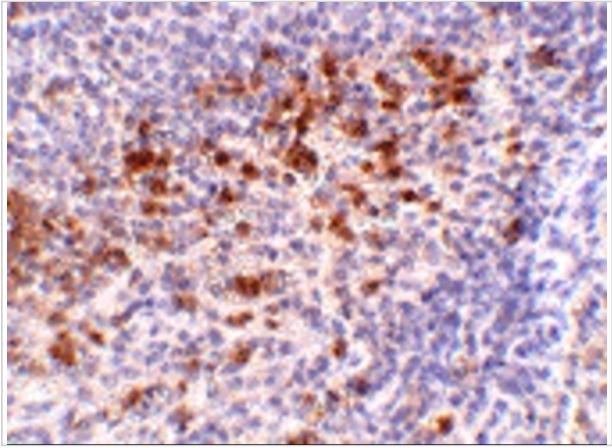
Properties

Purification	Cathelicidin Antibody is affinity chromatography purified via peptide column.
Clonality	Polyclonal
Isotype	IgG
Physical State	Liquid
Buffer	Cathelicidin Antibody is supplied in PBS containing 0.02% sodium azide.
Concentration	1 mg/mL
Storage Conditions	Cathelicidin antibody can be stored at 4°C for three months and -20°C, stable for up to one year. As with all antibodies care should be taken to avoid repeated freeze thaw cycles. Antibodies should not be exposed to prolonged high temperatures.



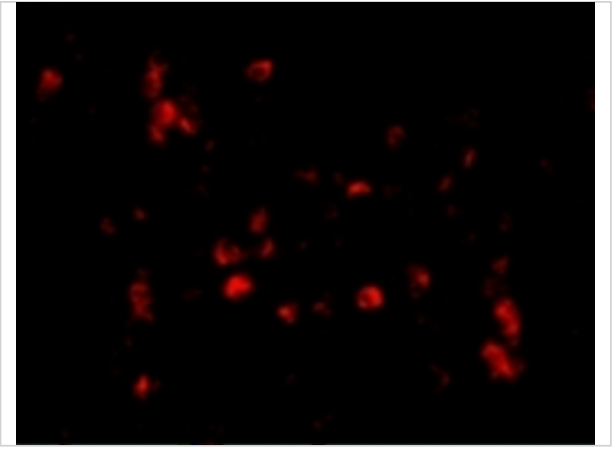
Cathelicidin Antibody 1

Western blot analysis of Cathelicidin in Human spleen tissue lysate with Cathelicidin antibody at 1 µg/mL.



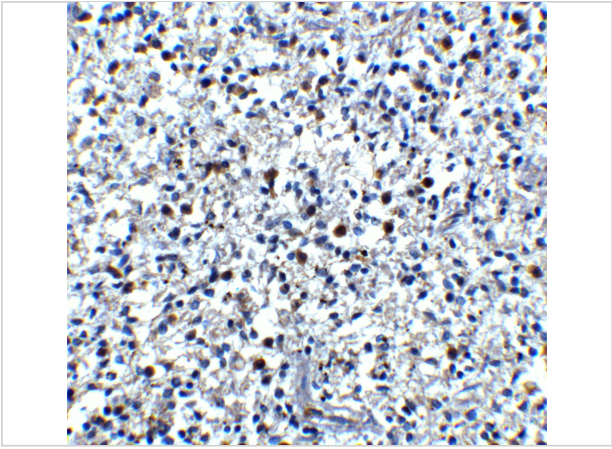
Cathelicidin Antibody 2

Immunohistochemistry of Cathelicidin in human spleen tissue with Cathelicidin antibody at 5 µg/mL.



Cathelicidin Antibody 3

Immunofluorescence of Cathelicidin in Human Spleen cells with Cathelicidin antibody at 20 µg/mL.



Cathelicidin Antibody 4

Immunohistochemistry of Cathelicidin in human spleen tissue with Cathelicidin antibody at 5 µg/mL.

Disclaimer

Disclaimer	Optimal dilutions/concentrations should be determined by the end user. The information provided is a guideline for product use. This product is for research use only.
------------	--

For research use only. For additional information, visit ProSci's [Terms and Conditions Page](#).