

ATG16 Antibody

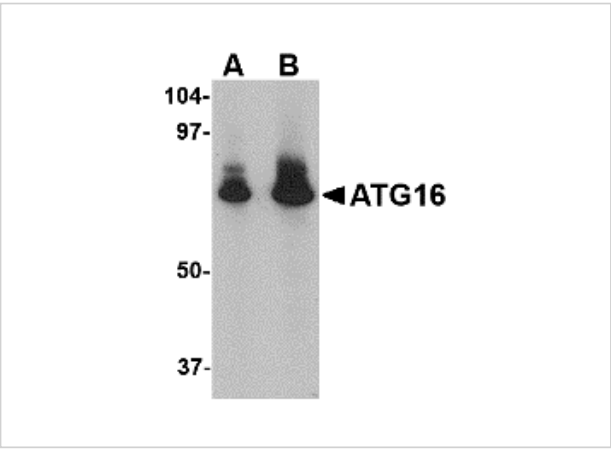
CATALOG NUMBER: 4425

Specifications

Host Species	Rabbit
Species Reactivity	Human
Homology	Predicted species reactivity based on immunogen sequence: Mouse: (94%)
Immunogen	ATG16 antibody was raised against a 18 amino acid synthetic peptide from near the amino terminus of human ATG16. The immunogen is located within amino acids 40 - 90 of ATG16.
Conjugate	Unconjugated
Tested Applications	ELISA, ICC, IF, WB
User Note	Optimal dilutions for each application to be determined by the researcher.

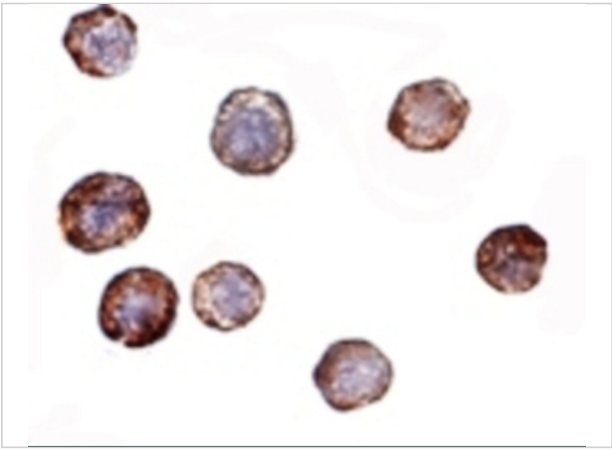
Properties

Purification	ATG16 Antibody is affinity chromatography purified via peptide column.
Clonality	Polyclonal
Isotype	IgG
Physical State	Liquid
Buffer	ATG16 Antibody is supplied in PBS containing 0.02% sodium azide.
Concentration	1 mg/mL
Storage Conditions	ATG16 antibody can be stored at 4°C for three months and -20°C, stable for up to one year. As with all antibodies care should be taken to avoid repeated freeze thaw cycles. Antibodies should not be exposed to prolonged high temperatures.



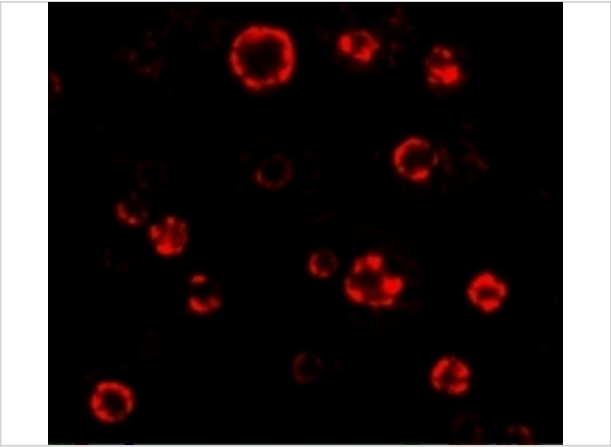
ATG16 Antibody 1

Western blot analysis of ATG16 in HeLa cell lysate with ATG16 antibody at (A) 1 and (B) 2 µg/mL.



ATG16 Antibody 2

Immunocytochemistry of ATG16 in HeLa cells with ATG16 antibody at 2 µg/mL.



ATG16 Antibody 3

Immunofluorescence of ATG16 in HeLa cells with ATG16 antibody at 4.75 µg/mL.

Disclaimer

Disclaimer	Optimal dilutions/concentrations should be determined by the end user. The information provided is a guideline for product use. This product is for research use only.
------------	--

For research use only. For additional information, visit ProSci's [Terms and Conditions Page](#).