

Plxdc2 Antibody

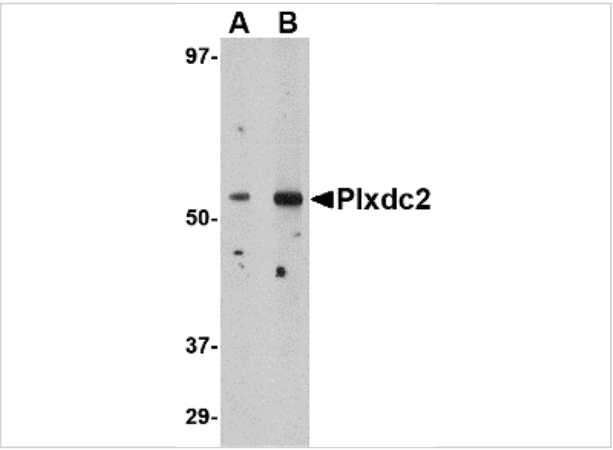
CATALOG NUMBER: 4417

Specifications

Host Species	Rabbit
Species Reactivity	Human, Mouse, Rat
Immunogen	Plxdc2 antibody was raised against a 18 amino acid synthetic peptide from near the amino terminus of human Plxdc2. The immunogen is located within amino acids 40 - 90 of Plxdc2.
Conjugate	Unconjugated
Tested Applications	ELISA, IF, IHC-P, WB
User Note	Optimal dilutions for each application to be determined by the researcher.
Predicted Molecular Weight	Predicted: 55 kDa Observed: 55 kDa

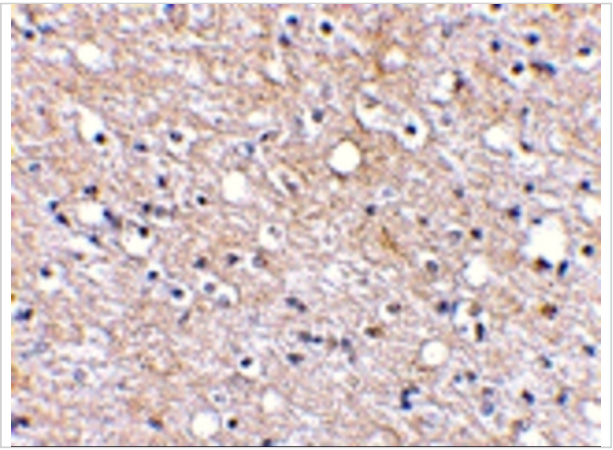
Properties

Purification	Plxdc2 Antibody is affinity chromatography purified via peptide column.
Clonality	Polyclonal
Isotype	IgG
Physical State	Liquid
Buffer	Plxdc2 Antibody is supplied in PBS containing 0.02% sodium azide.
Concentration	1 mg/mL
Storage Conditions	Plxdc2 antibody can be stored at 4°C for three months and -20°C, stable for up to one year. As with all antibodies care should be taken to avoid repeated freeze thaw cycles. Antibodies should not be exposed to prolonged high temperatures.



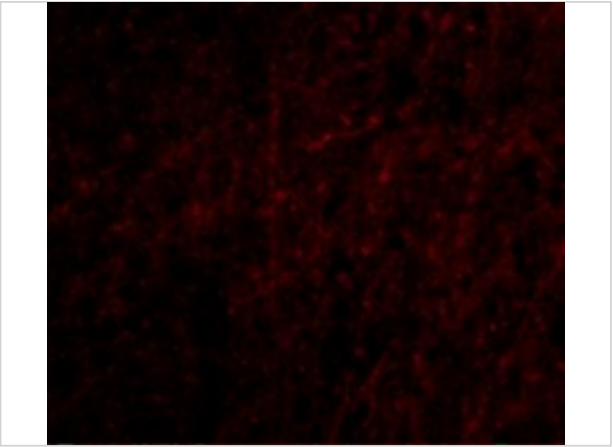
Plxdc2 Antibody 1

Western blot analysis of Plxdc2 in human brain tissue lysate with Plxdc2 antibody at (A) 0.5 (B) 1 µg/mL.



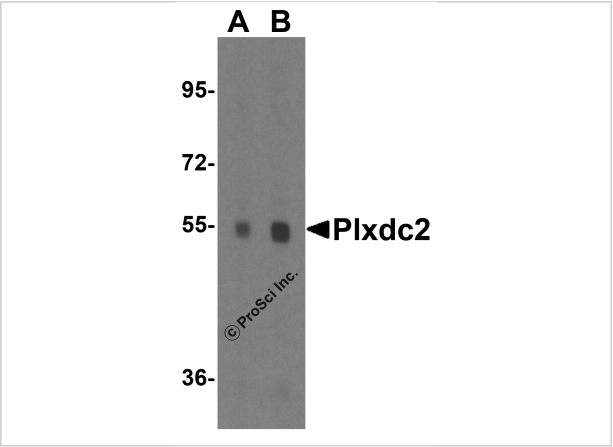
Plxdc2 Antibody 2

Immunohistochemical staining of human brain tissue using Plxdc2 antibody at 2.5 µg/mL.



Plxdc2 Antibody 3

Immunofluorescence of Plxdc2 in Human Brain cells with Plxdc2 antibody at 20 µg/mL.



Plxdc2 Antibody 4

Western blot analysis of Plxdc2 in mouse cerebrum tissue lysate with Plxdc2 antibody at (A) 1 and (B) 2 µg/mL.

Disclaimer

Disclaimer	Optimal dilutions/concentrations should be determined by the end user. The information provided is a guideline for product use. This product is for research use only.
------------	--

For research use only. For additional information, visit ProSci's [Terms and Conditions Page](#).