

TBC1D4 Antibody

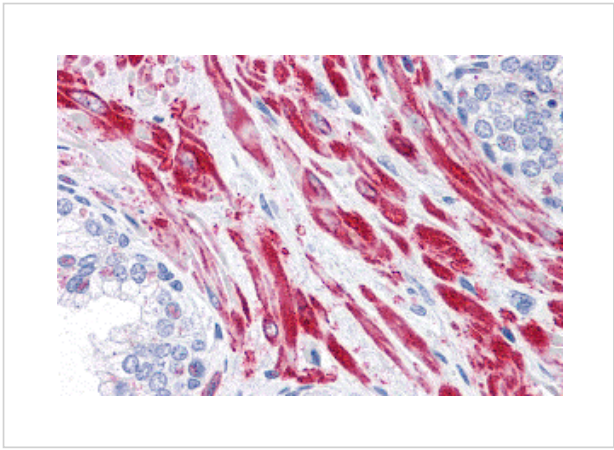
CATALOG NUMBER: 4415

Specifications

Host Species	Rabbit
Species Reactivity	Human
Homology	Predicted species reactivity based on immunogen sequence: Mouse: (89%)
Immunogen	TBC1D4 antibody was raised against an 19 amino acid peptide near the carboxy terminus of human TBC1D4 . The immunogen is located within amino acids 1190 - 1240 of TBC1D4.
Conjugate	Unconjugated
Tested Applications	ELISA, IHC-P
User Note	Optimal dilutions for each application to be determined by the researcher.
Predicted Molecular Weight	Predicted: 143 kDa Observed: 140 kDa

Properties

Purification	TBC1D4 Antibody is affinity chromatography purified via peptide column.
Clonality	Polyclonal
Isotype	IgG
Physical State	Liquid
Buffer	TBC1D4 Antibody is supplied in PBS containing 0.02% sodium azide.
Concentration	1 mg/mL
Storage Conditions	TBC1D4 antibody can be stored at 4°C for three months and -20°C, stable for up to one year.



TBC1D4 Antibody 1

Immunohistochemistry of TBC1D4 in human prostate tissue with TBC1D4 antibody at 10 µg/mL.

Disclaimer

Disclaimer	Optimal dilutions/concentrations should be determined by the end user. The information provided is a guideline for product use. This product is for research use only.
------------	--

For research use only. For additional information, visit ProSci's [Terms and Conditions Page](#).