

## IPR1 Antibody

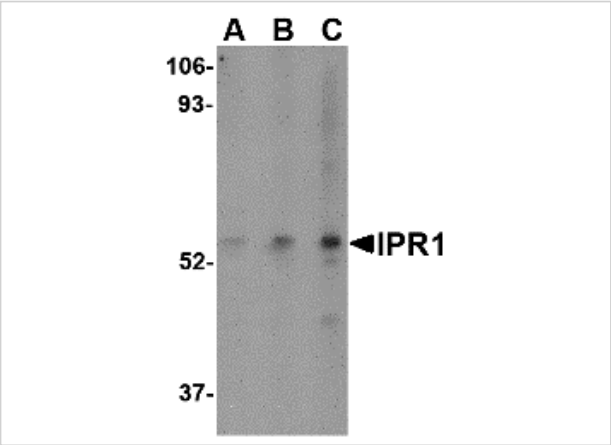
CATALOG NUMBER: 4407

### Specifications

Host Species	Rabbit
Species Reactivity	Human, Mouse, Rat
Immunogen	IPR1 antibody was raised against a 15 amino acid synthetic peptide near the carboxy terminus of the human IPR1. The immunogen is located within amino acids 470 - 520 of IPR1.
Conjugate	Unconjugated
Tested Applications	ELISA, IF, IHC-P, WB
User Note	Optimal dilutions for each application to be determined by the researcher.

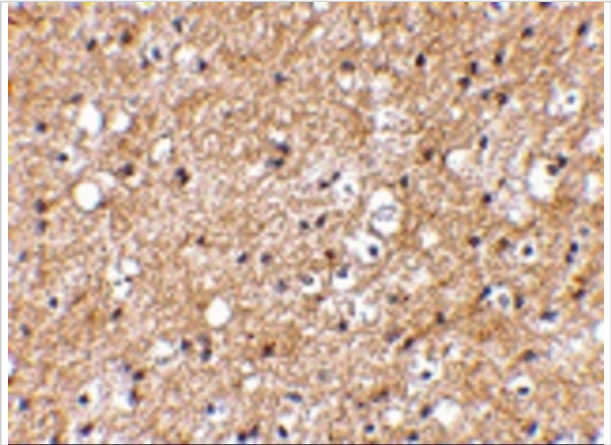
### Properties

Purification	IPR1 Antibody is affinity chromatography purified via peptide column.
Clonality	Polyclonal
Isotype	IgG
Physical State	Liquid
Buffer	IPR1 Antibody is supplied in PBS containing 0.02% sodium azide.
Concentration	1 mg/mL
Storage Conditions	IPR1 antibody can be stored at 4°C for three months and -20°C, stable for up to one year. As with all antibodies care should be taken to avoid repeated freeze thaw cycles. Antibodies should not be exposed to prolonged high temperatures.



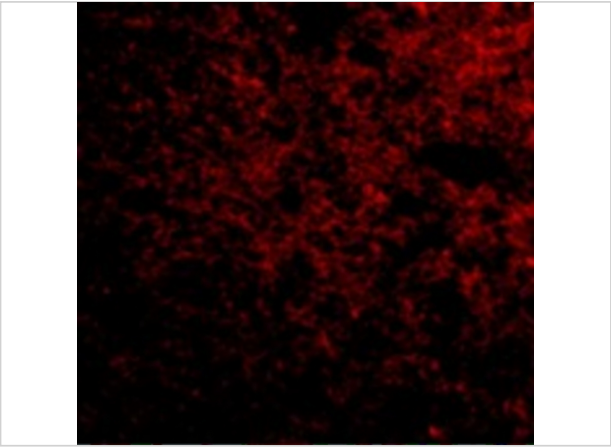
IPR1 Antibody 1

Western blot analysis of IPR1 in HeLa cell lysate with IPR1 antibody at (A) 0.5, (B) 1, and (C) 2  $\mu\text{g/mL}$ .



IPR1 Antibody 2

Immunohistochemical staining of human brain tissue using IPR1 antibody at 2.5  $\mu\text{g/mL}$ .



IPR1 Antibody 3

Immunofluorescence of IPR1 in Human Brain cells with IPR1 antibody at 50  $\mu\text{g/mL}$ .

Disclaimer

Disclaimer	Optimal dilutions/concentrations should be determined by the end user. The information provided is a guideline for product use. This product is for research use only.
------------	--

For research use only. For additional information, visit ProSci's [Terms and Conditions Page](#).