

Nhe-1 Antibody

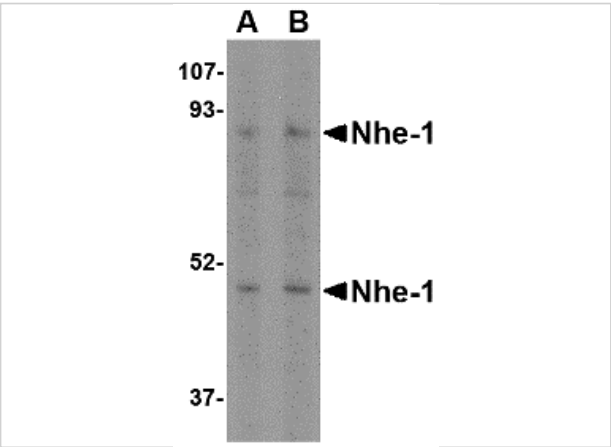
CATALOG NUMBER: 4377

Specifications

Host Species	Rabbit
Species Reactivity	Human, Mouse, Rat
Homology	Predicted species reactivity based on immunogen sequence: Rabbit: (95%), Pig: (95%), Bovine: (95%)
Immunogen	Nhe-1 antibody was raised against a 20 amino acid synthetic peptide near the carboxy terminus of the human Nhe-1. The immunogen is located within the last 50 amino acids of Nhe-1.
Conjugate	Unconjugated
Tested Applications	ELISA, IF, IHC-P, WB
User Note	Optimal dilutions for each application to be determined by the researcher.
Specificity	At least three isoforms of Nhe-1 are known to exist.
Predicted Molecular Weight	Predicted: 52, 90 kDa Observed: 50, 90 kDa

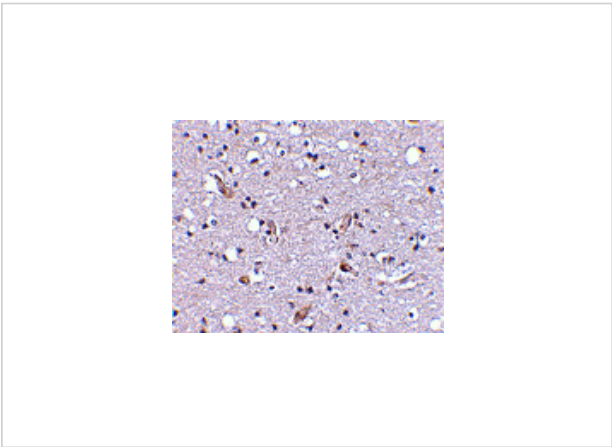
Properties

Purification	Nhe-1 Antibody is affinity chromatography purified via peptide column.
Clonality	Polyclonal
Isotype	IgG
Physical State	Liquid
Buffer	Nhe-1 Antibody is supplied in PBS containing 0.02% sodium azide.
Concentration	1 mg/mL
Storage Conditions	Nhe-1 antibody can be stored at 4°C for three months and -20°C, stable for up to one year. As with all antibodies care should be taken to avoid repeated freeze thaw cycles. Antibodies should not be exposed to prolonged high temperatures.



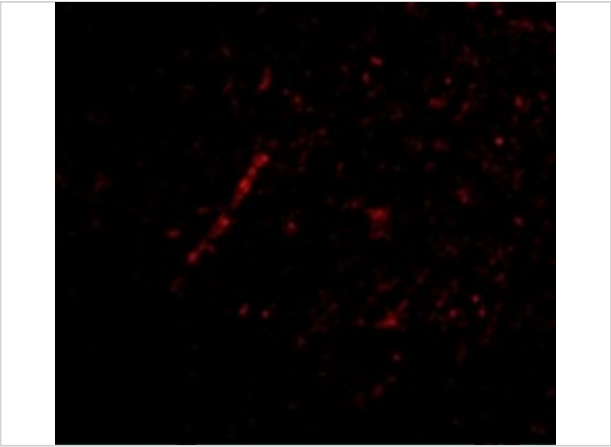
Nhe-1 Antibody 1

Western blot analysis of Nhe-1 in rat kidney tissue lysate with in with Nhe-1 antibody at (A) 1 and (B) 2 µg/mL.



Nhe-1 Antibody 2

Immunohistochemical staining of human brain tissue using Nhe-1 antibody at 2.5 µg/mL.



Nhe-1 Antibody 3

Immunofluorescence of Nhe-1 in Human Brain tissue with Nhe-1 antibody at 20 µg/mL.

Disclaimer

Disclaimer	Optimal dilutions/concentrations should be determined by the end user. The information provided is a guideline for product use. This product is for research use only.
------------	--

For research use only. For additional information, visit ProSci's [Terms and Conditions Page](#).