

TEM5 Antibody

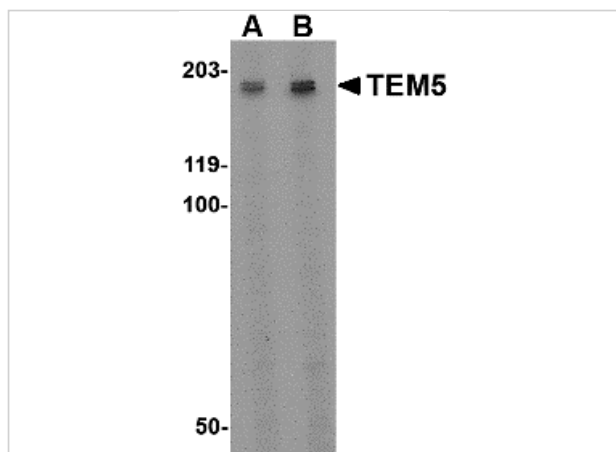
CATALOG NUMBER: 4371

Specifications

Host Species	Rabbit
Species Reactivity	Human, Rat
Homology	Predicted species reactivity based on immunogen sequence: Mouse: (85%)
Immunogen	TEM5 antibody was raised against a 14 amino acid synthetic peptide near the center of human TEM5. The immunogen is located within amino acids 560 - 610 of TEM5.
Conjugate	Unconjugated
Tested Applications	ELISA, IF, IHC-P, WB
User Note	Optimal dilutions for each application to be determined by the researcher.

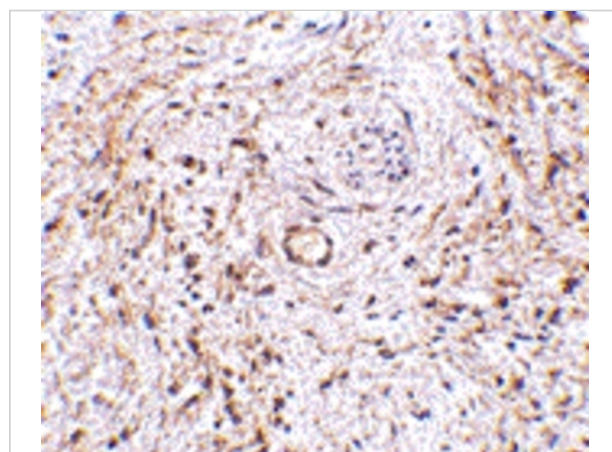
Properties

Purification	TEM5 Antibody is affinity chromatography purified via peptide column.
Clonality	Polyclonal
Isotype	IgG
Physical State	Liquid
Buffer	TEM5 Antibody is supplied in PBS containing 0.02% sodium azide.
Concentration	1 mg/mL
Storage Conditions	TEM5 antibody can be stored at 4°C for three months and -20°C, stable for up to one year. As with all antibodies care should be taken to avoid repeated freeze thaw cycles. Antibodies should not be exposed to prolonged high temperatures.



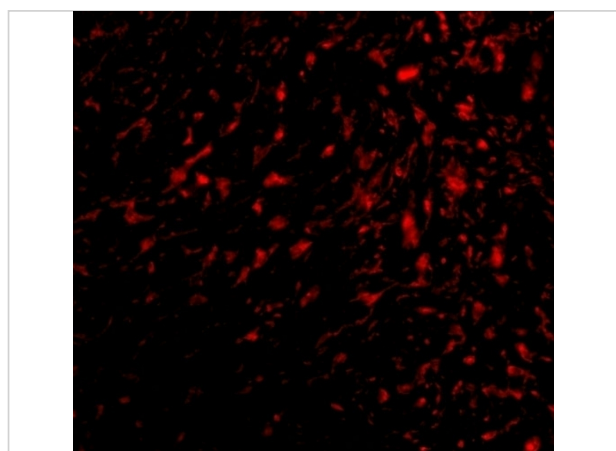
TEM5 Antibody 1

Western blot analysis of TEM5 in rat kidney tissue lysate with TEM5 antibody at (A) 2 µg/ml and (B) 4 µg/mL.



TEM5 Antibody 2

Immunohistochemistry of TEM5 in human bladder tissue with TEM5 antibody at 5 µg/mL.



TEM5 Antibody 3

Immunofluorescence of TEM5 in human bladder tissue with TEM5 antibody at 20 µg/mL.

Disclaimer

Disclaimer

Optimal dilutions/concentrations should be determined by the end user. The information provided is a guideline for product use. This product is for research use only.

For research use only. For additional information, visit ProSci's [Terms and Conditions Page](#).