

TEM1 Antibody

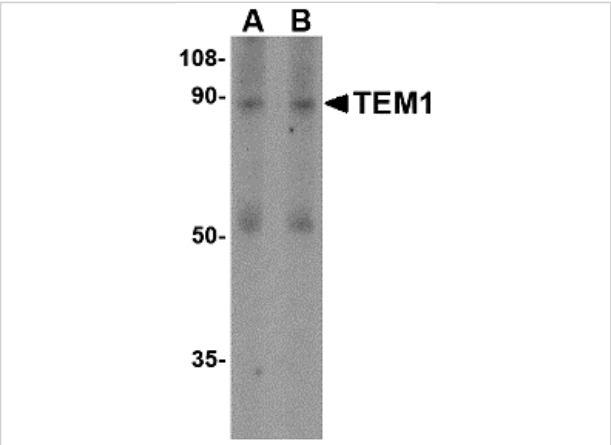
CATALOG NUMBER: 4359

Specifications

Host Species	Rabbit
Species Reactivity	Human
Homology	Predicted species reactivity based on immunogen sequence: Mouse (100%); Rat: (93%)
Immunogen	Anti-TEM-1 antibody (4359) was raised against a peptide corresponding to 14 amino acids near the amino terminus of human TEM-1. The immunogen is located within amino acids 40-90 of TEM-1
Conjugate	Unconjugated
Tested Applications	ELISA, IF, IHC-P, WB
User Note	Optimal dilutions for each application to be determined by the researcher.
Specificity	At least two isoforms of TEM1 are known to exist; this antibody recognizes only the larger isoform.
Predicted Molecular Weight	Predicted: 81kD Observed: 90 kD (post-modifications: 27 O-linked glycosylations)

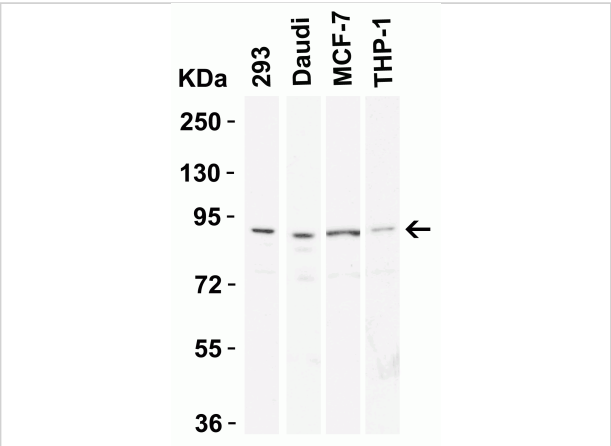
Properties

Purification	TEM1 Antibody is affinity chromatography purified via peptide column.
Clonality	Polyclonal
Isotype	IgG
Physical State	Liquid
Buffer	TEM1 Antibody is supplied in PBS containing 0.02% sodium azide.
Concentration	1 mg/mL
Storage Conditions	TEM1 antibody can be stored at 4°C for three months and -20°C, stable for up to one year. As with all antibodies care should be taken to avoid repeated freeze thaw cycles. Antibodies should not be exposed to prolonged high temperatures.



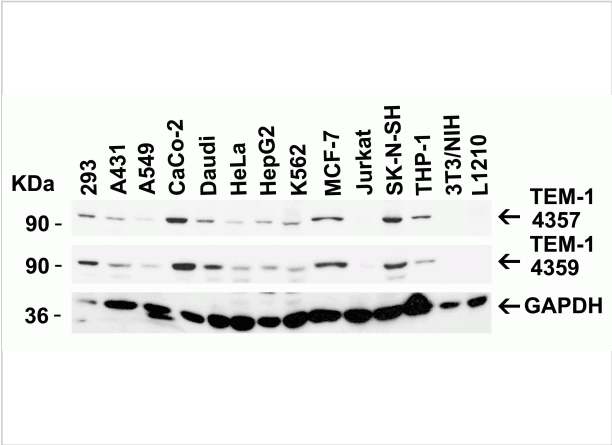
TEM1 Antibody 1

Figure 1 Western Blot Validation in Human Colon Tissue
 Loading: 15 µg of lysates per lane. Antibodies: TEM-1 4359, (A, 0.5µg/mL; B, 1µg/mL), 1h incubation at RT in 5% NFDm/TBST....



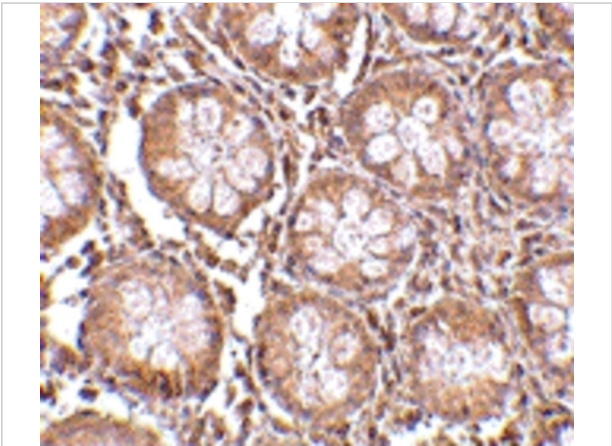
TEM1 Antibody 3

Figure 3 Western Blot Validation in Human Tissue
 Loading: 15 µg of lysates per lane. Antibodies: TEM-1 4359, (0.5 µg/mL), 1h incubation at RT in 5% NFDm/TBST. Secondary: Goat anti...



TEM1 Antibody 2

Figure 2 Independent Antibody Validation (IAV) via Protein Expression Profile in Cell Lines
 Loading: 15 µg of lysates per lane. Antibodies: TEM-1 4357, (2 µg/mL), TEM-1 4359, (1...



TEM1 Antibody 4

Figure 4 Immunohistochemistry Validation of TEM-1 in Human Colon Tissue
 Immunohistochemical analysis of paraffin-embedded Human Colon tissue using anti-TEM-1 antibody (4359) a...

Disclaimer

Disclaimer

Optimal dilutions/concentrations should be determined by the end user. The information provided is a guideline for product use. This product is for research use only.

For research use only. For additional information, visit ProSci's [Terms and Conditions Page](#).