

## TEM7 Antibody

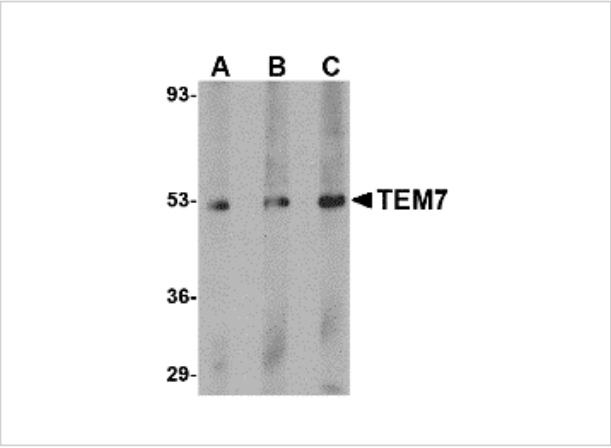
CATALOG NUMBER: 4339

### Specifications

Host Species	Rabbit
Species Reactivity	Human, Mouse, Rat
Immunogen	TEM7 antibody was raised against a 16 amino acid synthetic peptide from near the carboxy terminus of human TEM7. The immunogen is located within the last 50 amino acids of TEM7.
Conjugate	Unconjugated
Tested Applications	ELISA, IF, IHC-P, WB
User Note	Optimal dilutions for each application to be determined by the researcher.

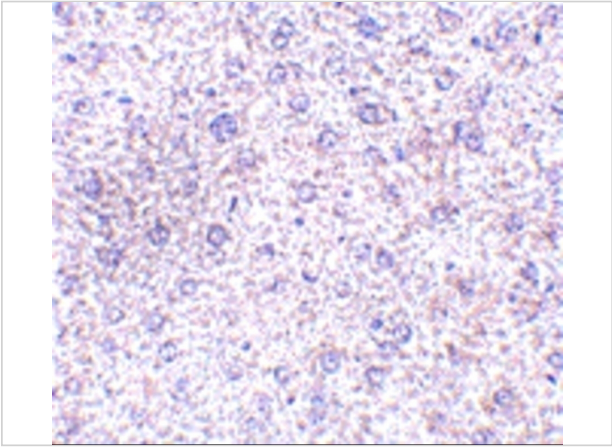
### Properties

Purification	TEM7 Antibody is affinity chromatography purified via peptide column.
Clonality	Polyclonal
Isotype	IgG
Physical State	Liquid
Buffer	TEM7 Antibody is supplied in PBS containing 0.02% sodium azide.
Concentration	1 mg/mL
Storage Conditions	TEM7 antibody can be stored at 4°C for three months and -20°C, stable for up to one year. As with all antibodies care should be taken to avoid repeated freeze thaw cycles. Antibodies should not be exposed to prolonged high temperatures.



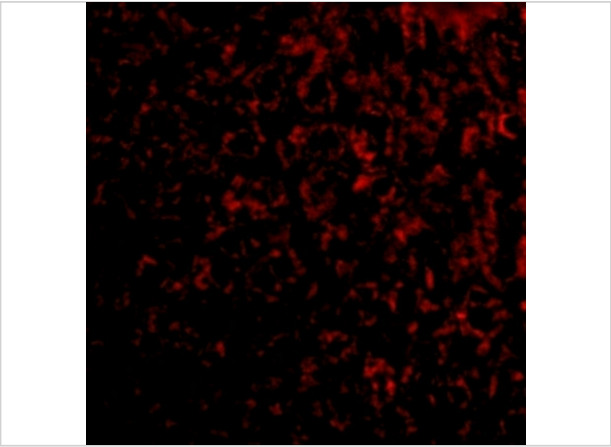
TEM7 Antibody 1

Western blot analysis of TEM7 in human liver tissue lysate with TEM7 antibody at (A) 0.5, (B) 1 and (C) 2 µg/mL.



TEM7 Antibody 2

Immunohistochemistry of TEM7 in mouse liver tissue with TEM7 antibody at 2.5 µg/mL.



TEM7 Antibody 3

Immunofluorescence of TEM7 in mouse liver tissue with TEM7 antibody at 20 µg/mL.

Disclaimer

Disclaimer	Optimal dilutions/concentrations should be determined by the end user. The information provided is a guideline for product use. This product is for research use only.
------------	--

For research use only. For additional information, visit ProSci's [Terms and Conditions Page](#).