

BRCC36 Antibody

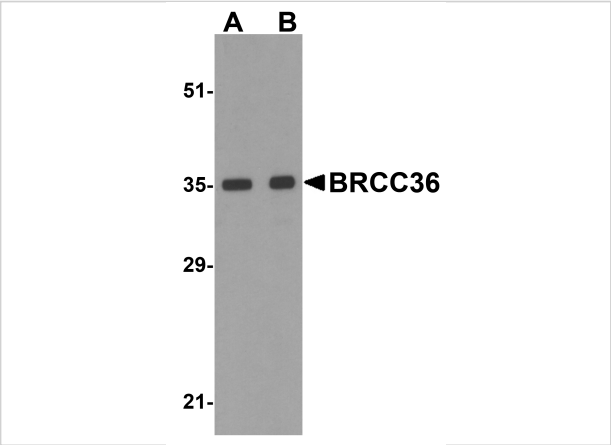
CATALOG NUMBER: 4331

Specifications

Host Species	Rabbit
Species Reactivity	Human, Mouse, Rat
Homology	Predicted species reactivity based on immunogen sequence: Bovine: (76%)
Immunogen	BRCC36 antibody was raised against a 18 amino acid synthetic peptide from near the amino terminus of human BRCC36. The immunogen is located within amino acids 20 - 70 of BRCC36.
Conjugate	Unconjugated
Tested Applications	ELISA, IF, IHC-P, WB
User Note	Optimal dilutions for each application to be determined by the researcher.
Predicted Molecular Weight	Predicted: 35 kDa Observed: 35 kDa

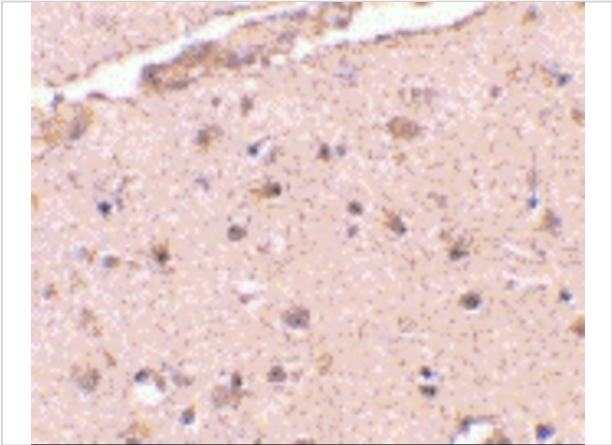
Properties

Purification	BRCC36 Antibody is affinity chromatography purified via peptide column.
Clonality	Polyclonal
Isotype	IgG
Physical State	Liquid
Buffer	BRCC36 Antibody is supplied in PBS containing 0.02% sodium azide.
Concentration	1 mg/mL
Storage Conditions	BRCC36 antibody can be stored at 4°C for three months and -20°C, stable for up to one year. As with all antibodies care should be taken to avoid repeated freeze thaw cycles. Antibodies should not be exposed to prolonged high temperatures.



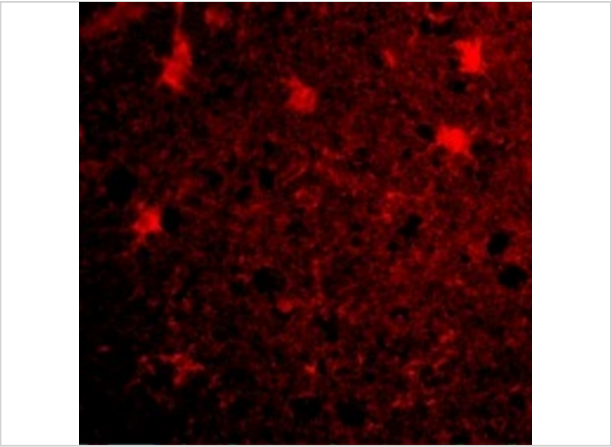
BRCC36 Antibody 1

Western blot analysis of BRCC36 in MCF7 cell lysate with BRCC36 antibody at (A) 0.5 and (B) 1 µg/mL.



BRCC36 Antibody 2

Immunohistochemistry of BRCC36 in human brain tissue with BRCC36 antibody at 2.5 µg/mL.



BRCC36 Antibody 3

Immunofluorescence of BRCC36 in Human Brain cells with BRCC36 antibody at 20 µg/mL.

Disclaimer

Disclaimer	Optimal dilutions/concentrations should be determined by the end user. The information provided is a guideline for product use. This product is for research use only.
------------	--

For research use only. For additional information, visit ProSci's [Terms and Conditions Page](#).