

CCDC98 Antibody

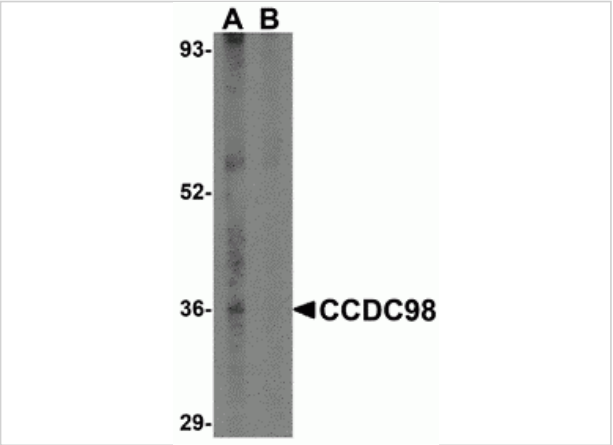
CATALOG NUMBER: 4321

Specifications

Host Species	Rabbit
Species Reactivity	Human, Mouse
Homology	Predicted species reactivity based on immunogen sequence: Rat: (100%), Bovine: (93%), Chicken: (87%)
Immunogen	CCDC98 antibody was raised against a 15 amino acid synthetic peptide from near the amino terminus of human CCDC98. The immunogen is located within amino acids 80 - 130 of CCDC98.
Conjugate	Unconjugated
Tested Applications	ELISA, IHC-P, WB
User Note	Optimal dilutions for each application to be determined by the researcher.

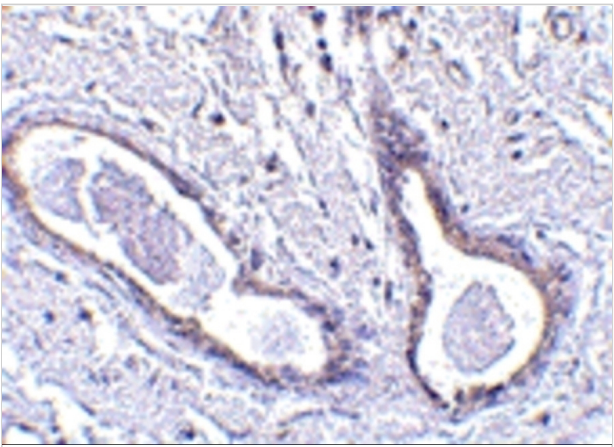
Properties

Purification	CCDC98 Antibody is affinity chromatography purified via peptide column.
Clonality	Polyclonal
Isotype	IgG
Physical State	Liquid
Buffer	CCDC98 Antibody is supplied in PBS containing 0.02% sodium azide.
Concentration	1 mg/mL
Storage Conditions	CCDC98 antibody can be stored at 4°C for three months and -20°C, stable for up to one year. As with all antibodies care should be taken to avoid repeated freeze thaw cycles. Antibodies should not be exposed to prolonged high temperatures.



CCDC98 Antibody 1

Western blot analysis of CCDC98 in human breast tissue lysate in (A) the absence and (B) presence of blocking peptide with CCDC98 antibody at 1 µg/mL.



CCDC98 Antibody 2

Immunohistochemistry of CCDC98 in human breast tissue with CCDC98 antibody at 5 µg/mL.

Disclaimer

Disclaimer	Optimal dilutions/concentrations should be determined by the end user. The information provided is a guideline for product use. This product is for research use only.
------------	--

For research use only. For additional information, visit ProSci's [Terms and Conditions Page](#).