

## STEAP2 Antibody

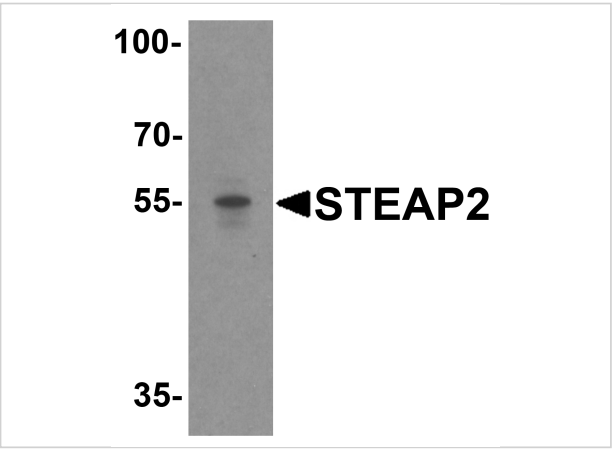
CATALOG NUMBER: 4307

### Specifications

Host Species	Rabbit
Species Reactivity	Human, Mouse
Immunogen	STEAP2 antibody was raised against a 16 amino acid synthetic peptide from near the carboxy terminus of human STEAP2. The immunogen is located within the last 50 amino acids of STEAP2.
Conjugate	Unconjugated
Tested Applications	ELISA, IF, IHC-P, WB
User Note	Optimal dilutions for each application to be determined by the researcher.
Specificity	This STEAP2 antibody does not cross-react with other STEAP proteins.
Predicted Molecular Weight	Predicted: 54 kDa Observed: 55 kDa

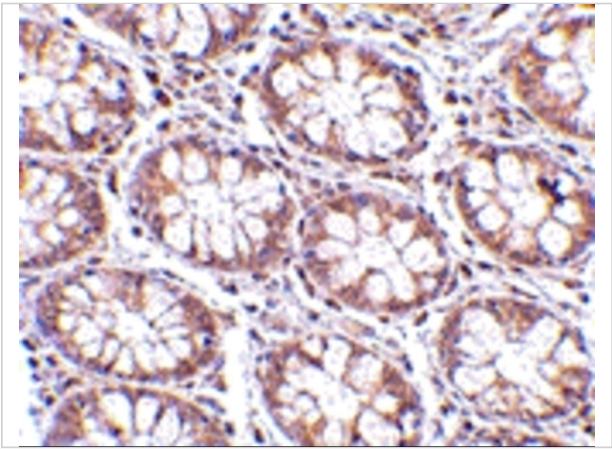
### Properties

Purification	STEAP2 Antibody is affinity chromatography purified via peptide column.
Clonality	Polyclonal
Isotype	IgG
Physical State	Liquid
Buffer	STEAP2 Antibody is supplied in PBS containing 0.02% sodium azide.
Concentration	1 mg/mL
Storage Conditions	STEAP2 antibody can be stored at 4°C for three months and -20°C, stable for up to one year. As with all antibodies care should be taken to avoid repeated freeze thaw cycles. Antibodies should not be exposed to prolonged high temperatures.



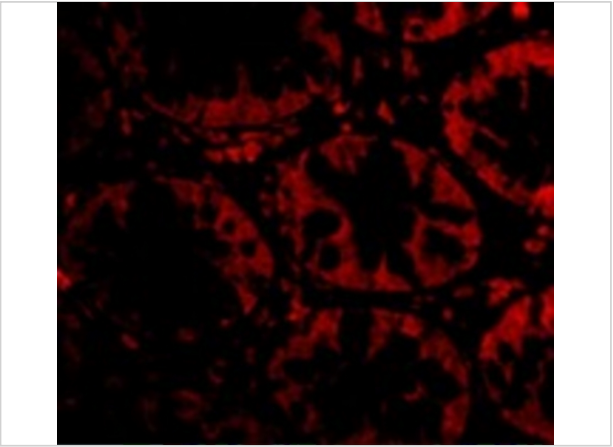
STEAP2 Antibody 1

Western blot analysis of STEAP2 in human prostate tissue lysate with STEAP2 antibody at 1 µg/mL.



STEAP2 Antibody 2

Immunohistochemistry of STEAP2 in human colon tissue with STEAP2 antibody at 2.5 µg/mL.



STEAP2 Antibody 3

Immunofluorescence of STEAP2 in Human Colon cells with STEAP2 antibody at 20 µg/mL.

Disclaimer

Disclaimer	Optimal dilutions/concentrations should be determined by the end user. The information provided is a guideline for product use. This product is for research use only.
------------	--

For research use only. For additional information, visit ProSci's [Terms and Conditions Page](#).