

## STEAP1 Antibody

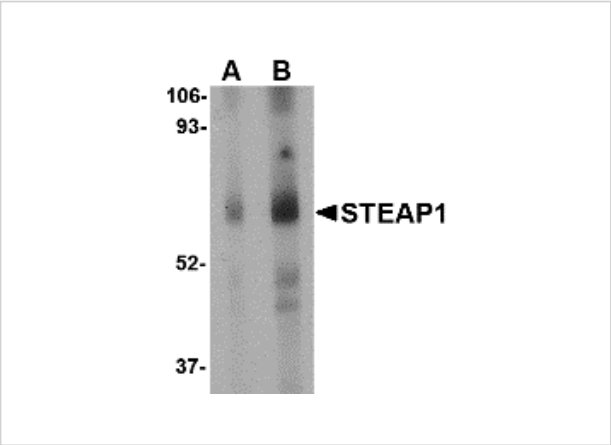
CATALOG NUMBER: 4305

### Specifications

Host Species	Rabbit
Species Reactivity	Human, Mouse, Rat
Homology	Predicted species reactivity based on immunogen sequence: Pig: (94%)
Immunogen	STEAP1 antibody was raised against a 16 amino acid synthetic peptide from near the center of human STEAP1. The immunogen is located within amino acids 130 - 180 of STEAP1.
Conjugate	Unconjugated
Tested Applications	ELISA, IF, IHC-P, WB
User Note	Optimal dilutions for each application to be determined by the researcher.
Specificity	This STEAP1 antibody does not cross-react with other STEAP proteins.

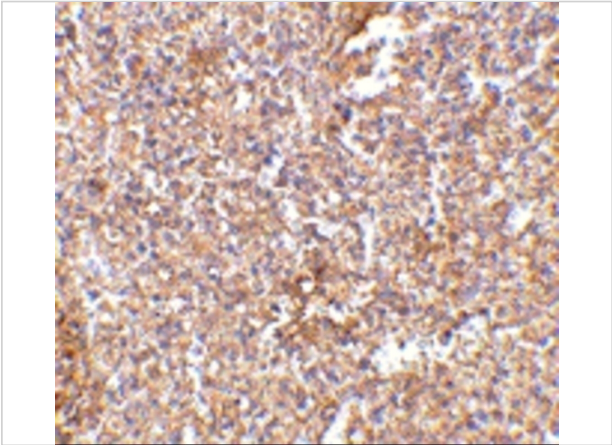
### Properties

Purification	STEAP1 Antibody is affinity chromatography purified via peptide column.
Clonality	Polyclonal
Isotype	IgG
Physical State	Liquid
Buffer	STEAP1 Antibody is supplied in PBS containing 0.02% sodium azide.
Concentration	1 mg/mL
Storage Conditions	STEAP1 antibody can be stored at 4°C for three months and -20°C, stable for up to one year. As with all antibodies care should be taken to avoid repeated freeze thaw cycles. Antibodies should not be exposed to prolonged high temperatures.



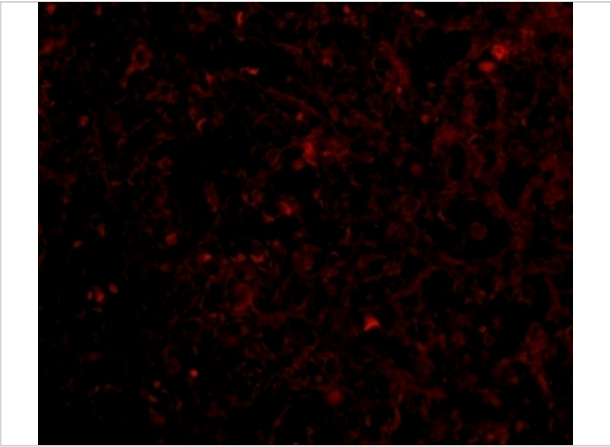
STEAP1 Antibody 1

Western blot analysis of STEAP1 in human spleen tissue lysate with STEAP1 antibody at (A) 1 and (B) 2 µg/mL.



STEAP1 Antibody 2

Immunohistochemistry of STEAP1 in human spleen tissue with STEAP1 antibody at 2.5 µg/mL.



STEAP1 Antibody 3

Immunofluorescence of STEAP1 in human spleen tissue with STEAP1 antibody at 20 µg/mL.

Disclaimer

Disclaimer	Optimal dilutions/concentrations should be determined by the end user. The information provided is a guideline for product use. This product is for research use only.
------------	--

For research use only. For additional information, visit ProSci's [Terms and Conditions Page](#).