

KIF5 Antibody

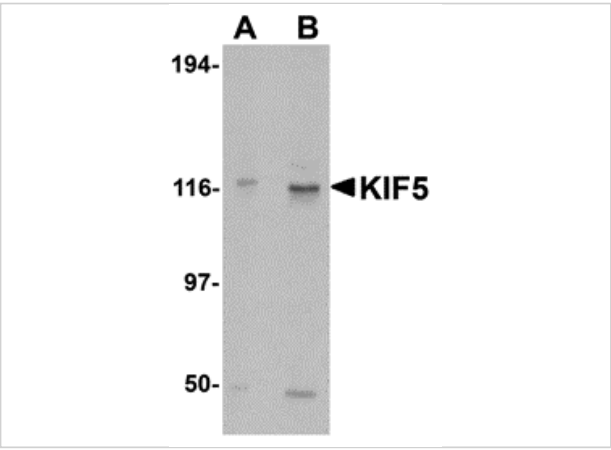
CATALOG NUMBER: 4289

Specifications

Host Species	Rabbit
Species Reactivity	Human, Mouse, Rat
Immunogen	KIF5 antibody was raised against a 20 amino acid synthetic peptide from near the carboxy terminus of human KIF5. The immunogen is located within amino acids 880 - 930 of KIF5.
Conjugate	Unconjugated
Tested Applications	ELISA, ICC, IF, IHC, WB
User Note	Optimal dilutions for each application to be determined by the researcher.
Specificity	At least three isoforms of KIF5 are known to exist; this antibody will recognize all three isoforms.
Predicted Molecular Weight	Predicted: 114 kDa Observed: 116 kDa

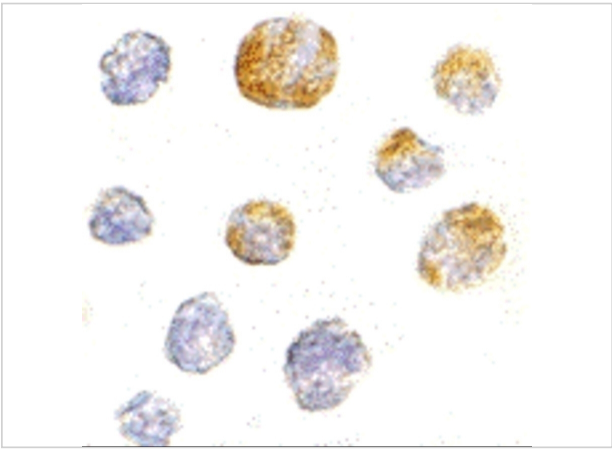
Properties

Purification	KIF5 Antibody is affinity chromatography purified via peptide column.
Clonality	Polyclonal
Isotype	IgG
Physical State	Liquid
Buffer	KIF5 Antibody is supplied in PBS containing 0.02% sodium azide.
Concentration	1 mg/mL
Storage Conditions	KIF5 antibody can be stored at 4°C for three months and -20°C, stable for up to one year. As with all antibodies care should be taken to avoid repeated freeze thaw cycles. Antibodies should not be exposed to prolonged high temperatures.



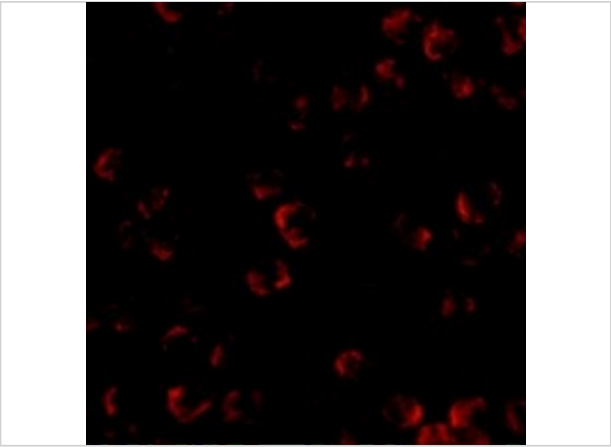
KIF5 Antibody 1

Western blot analysis of KIF5 in K562 cell lysate with KIF5 antibody at (A) 0.5 and (B) 1 µg/mL.



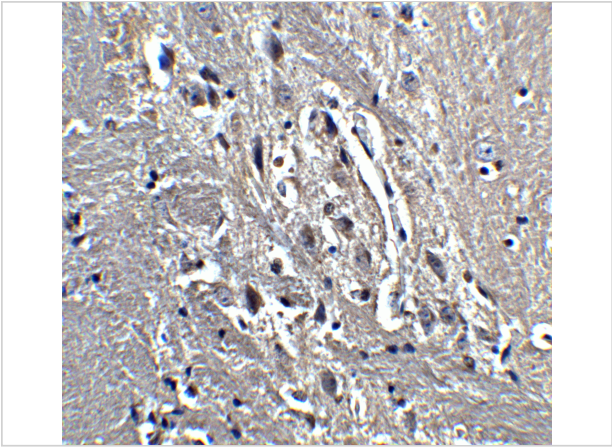
KIF5 Antibody 2

Immunocytochemistry of KIF5 in K562 cells with KIF5 antibody at 5 µg/mL.



KIF5 Antibody 3

Immunofluorescence of KIF5 in K562 cells with KIF5 antibody at 20 µg/mL.



KIF5 Antibody 4

Immunohistochemistry of KIF5 in mouse brain tissue with KIF5 antibody at 5 µg/mL.

Disclaimer

Disclaimer	Optimal dilutions/concentrations should be determined by the end user. The information provided is a guideline for product use. This product is for research use only.
------------	--

For research use only. For additional information, visit ProSci's [Terms and Conditions Page](#).