

TDP43 Antibody

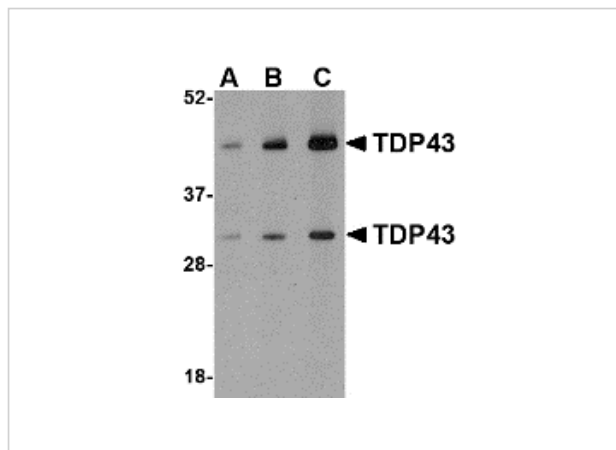
CATALOG NUMBER: 4283

Specifications

Host Species	Rabbit
Species Reactivity	Human, Mouse, Rat
Homology	Predicted species reactivity based on immunogen sequence: Chicken: (100%)
Immunogen	TDP43 antibody was raised against a 15 amino acid synthetic peptide from near the amino terminus of human TDP43. The immunogen is located within amino acids 60 - 110 of TDP43.
Conjugate	Unconjugated
Tested Applications	ELISA, ICC, IF, WB
User Note	Optimal dilutions for each application to be determined by the researcher.
Specificity	At least two isoforms are known to exist for this protein; this TDP43 antibody will recognize both isoforms.

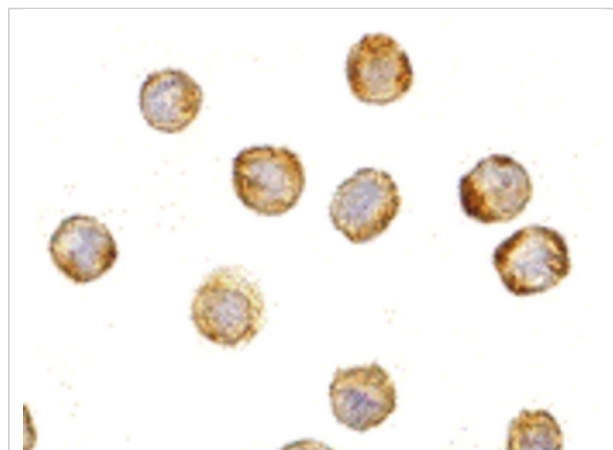
Properties

Purification	TDP43 Antibody is affinity chromatography purified via peptide column.
Clonality	Polyclonal
Isotype	IgG
Physical State	Liquid
Buffer	TDP43 Antibody is supplied in PBS containing 0.02% sodium azide.
Concentration	1 mg/mL
Storage Conditions	TDP43 antibody can be stored at 4°C for three months and -20°C, stable for up to one year. As with all antibodies care should be taken to avoid repeated freeze thaw cycles. Antibodies should not be exposed to prolonged high temperatures.



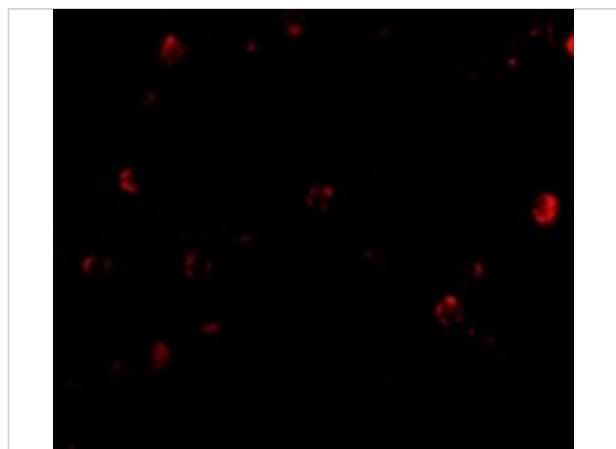
TDP43 Antibody 1

Western blot analysis of TDP43 in HeLa cell lysate with TDP43 antibody at (A) 0.5, (B) 1 and (C) 2 $\mu\text{g/mL}$.



TDP43 Antibody 2

Immunocytochemistry of TDP43 in HeLa cells with TDP43 antibody at 5 $\mu\text{g/mL}$.



TDP43 Antibody 3

Immunofluorescence of TDP43 in HeLa cells with TDP43 antibody at 20 $\mu\text{g/mL}$.

Disclaimer

Disclaimer

Optimal dilutions/concentrations should be determined by the end user. The information provided is a guideline for product use. This product is for research use only.

For research use only. For additional information, visit ProSci's [Terms and Conditions Page](#).