

## ORAI1 Antibody

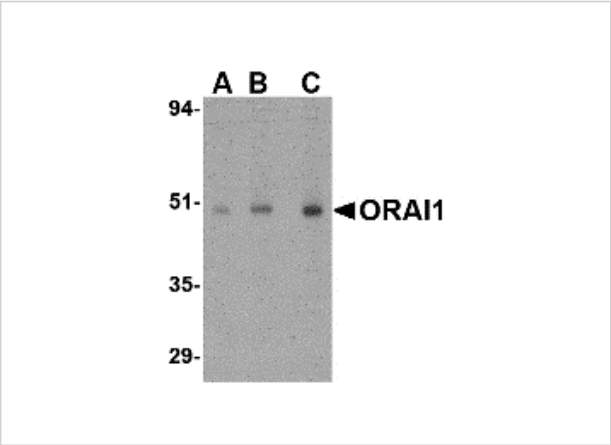
CATALOG NUMBER: 4281

### Specifications

Host Species	Rabbit
Species Reactivity	Human, Mouse
Homology	Predicted species reactivity based on immunogen sequence: Rat: (93%), Chicken: (100%)
Immunogen	ORAI1 antibody was raised against a 16 amino acid synthetic peptide from near the carboxy terminus of human ORAI1. The immunogen is located within the last 50 amino acids of ORAI1.
Conjugate	Unconjugated
Tested Applications	ELISA, IF, IHC-P, WB
User Note	Optimal dilutions for each application to be determined by the researcher.
Specificity	This antibody is predicted to have no cross-reactivity to ORAI2 or ORAI3.

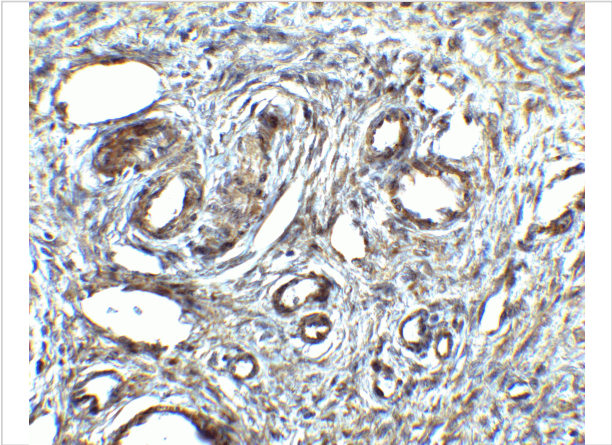
### Properties

Purification	ORAI1 Antibody is affinity chromatography purified via peptide column.
Clonality	Polyclonal
Isotype	IgG
Physical State	Liquid
Buffer	ORAI1 Antibody is supplied in PBS containing 0.02% sodium azide.
Concentration	1 mg/mL
Storage Conditions	ORAI1 antibody can be stored at 4°C for three months and -20°C, stable for up to one year. As with all antibodies care should be taken to avoid repeated freeze thaw cycles. Antibodies should not be exposed to prolonged high temperatures.



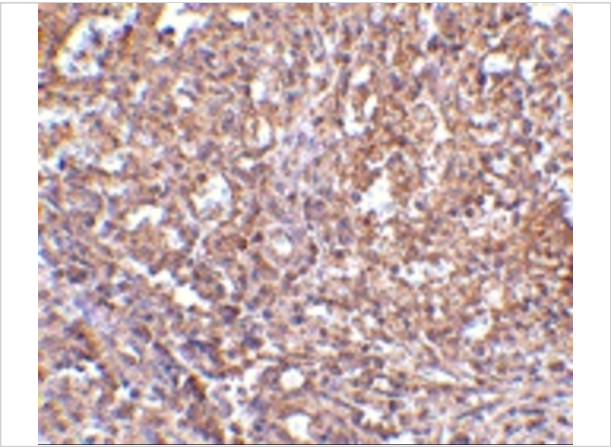
ORAI1 Antibody 1

Western blot analysis of ORAI1 in human ovary tissue lysate with ORAI1 antibody at (A) 0.5, (B) 1 and (C) 2 µg/mL.



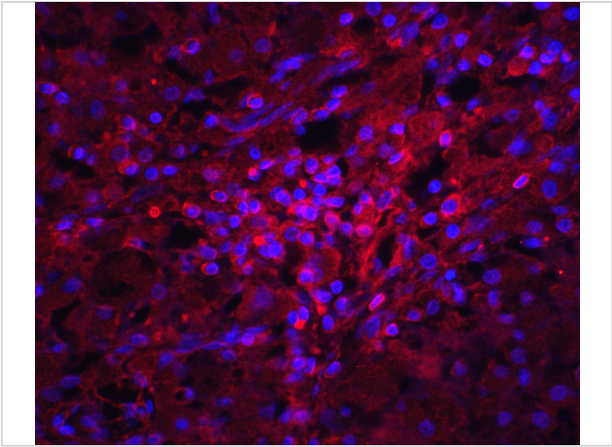
ORAI1 Antibody 2

Immunohistochemistry of ORAI1 in human ovary tissue with ORAI1 antibody at 2.5 µg/mL.



ORAI1 Antibody 3

ORAI1 Antibody



ORAI1 Antibody 4

Immunohistochemistry of ORAI1 in human spleen tissue with ORAI1 antibody at 2.5 µg/mL.

Disclaimer

Disclaimer	Optimal dilutions/concentrations should be determined by the end user. The information provided is a guideline for product use. This product is for research use only.
------------	--

For research use only. For additional information, visit ProSci's [Terms and Conditions Page](#).